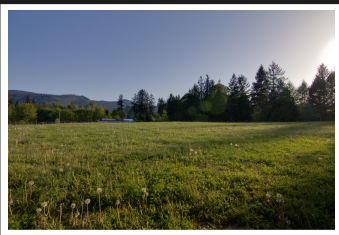


PEMBERTON
HOLMES

· ESTABLISHED 1887 ·

10 ACRE FARM IN GLENORA

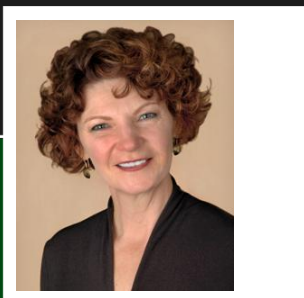
3965 ROWE ROAD



Serious infrastructure for farming in place

HOMESTEAD in sunny Glenora! Commercial or hobby farming, horse property or lifestyle dream! Ten acres of south-facing, flat land includes gardens, orchards, lush pastures and 4 acres of park-like forest. Quiet acreage on dead end road, close to hiking & riding trails. Mature landscaping surrounds the unique, 1940 farmhouse, which has undergone multiple upgrades. Sturdy house contains oil and wood furnaces. One acre food garden is deer-fenced, irrigated and includes new berries, kiwi, and fruit trees. Excellent, virtually stone-free soil and plenty of good, clean water. Fir forest with walking trails and seasonal pond. Permanent and temporary fencing serve two small animal barns, loading ramp, and chicken coop. Presently producing pork, lamb and pastured poultry in mobile pens. 3-bay workshop with exterior sheds and attic space. Yard includes fully-serviced RV site for on-farm accommodation or to meet market gardening standards. Rural & private 7 min from Duncan. ALR zoned.

Priced at
\$659,000



SANDRA
PEMBERTON HOLMES - DUNCAN
CARSWELL

Area	Glenora
Bedrooms	3
Bathrooms	1
Lot Size	10
Floor Space	1430

Age	
Parking	Multiple
Taxes	Parking RV
Tax Year	parking
MLS#	753
	2014

391325

(250) 746-8123
sandra@sandracarwell.ca
sandracarwell.ca

Scan this QR
Code with your
smart phone



23 Queens Road
Duncan, BC