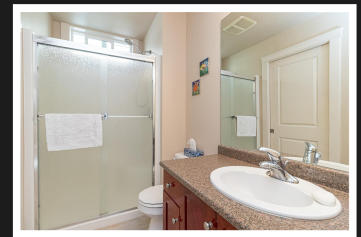
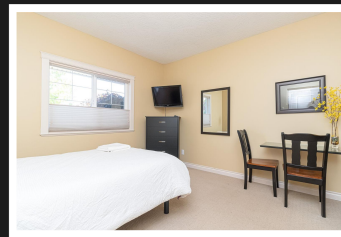
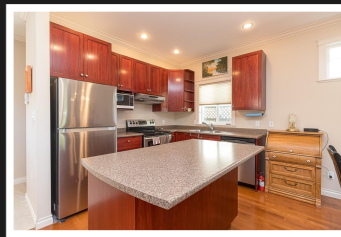


PEMBERTON
HOLMES

· ESTABLISHED 1887 ·

9945 SWIFTSURE PL



Proudly offering this 2006 Built, 3 Bedroom, 2 Bathroom home backing onto Sidney Elementary school. Open-concept design with inline Living, Dining, and Kitchen. Cozy propane Fireplace. Primary bedroom on the main with direct access to 4pce. ensuite. The second level has 2 generous-size bedrooms and 4pce. bathroom. private patio space plus binous detached 11x19 single car garage. This home is just minutes away from the Ocean, local parks, and Vibrant downtown Sidney. Call now for an appointment to view



Priced at
\$959,900

Area	Sidney N-East	Age	2006
Bedrooms	3	Taxes	4037
Bathrooms	2	Tax Year	2023
Lot Size	4107	MLS#	971453
Floor Space	1598	Parking	

PATRICKACHTZNER

Pemberton Holmes - Sidney

Scan this QR
Code with your
smart phone



(250) 656-3486
patrick.achtzner@gmail.com

107-2360 Beacon Ave
Sidney, V8L 1X3