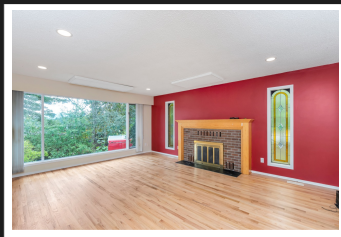
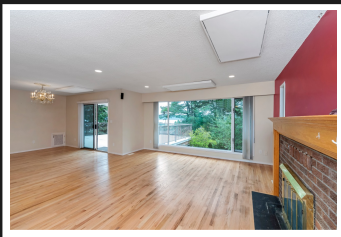


PEMBERTON
HOLMES

· ESTABLISHED 1887 ·

1633 ADELAIDE STREET

Crofton, BC



Welcome Home!

Striking mountain and ocean views, both from inside the home, or from the massive 590 square foot deck! On the main level of this downtown Crofton home, you'll find the master bedroom with ensuite bathroom, the second bedroom and bathroom, kitchen, large pantry, laundry, dining room and living room with a beautiful wood-burning fireplace. Downstairs you'll find the workshop and third bedroom, plus a spacious in-law or nanny suite- complete with full kitchen and separate laundry! The two car garage, workshop and greenhouse make this property perfect for a hobbyist. Take a stroll and explore the oceanfront boardwalk, hop on a ferry to Saltspring, take your dog to one of the dog parks or explore all the ample hiking or biking opportunities nearby.

Priced at
\$460,000

Area	Crofton
Bedrooms	3
Bathrooms	3
Lot Size	0.23
Floor Space	2387

Age	1983
Taxes	4212
Tax Year	2019
MLS#	416050
Parking	2 Spaces



TERYL BRENNEMAN

Pemberton Holmes - Cloverdale

Scan this QR
Code with your
smart phone



(250) 384-8124
teryl@capitalcitygroup.ca

150 - 805 Cloverdale Ave
Victoria, V8X 2S9