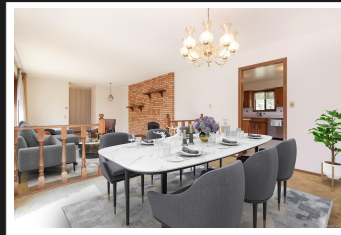
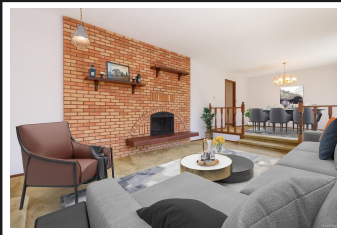


PEMBERTON
HOLMES

· ESTABLISHED 1887 ·

SPACIOUS LARGE LOT HOME

440 Glendower Rd

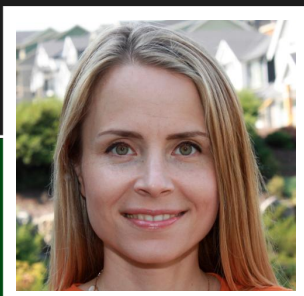


440 Glendower Rd

Proudly presented this first time on the market 1980 year built home located in a heart of West Saanich on a no through road on over a 3 acres lot!!! This bright and well built over 3000 sq.ft. home with a very good bones features 3 bedrooms +den on 3 split levels and a ton of space for family and rec rooms, bring your decorating ideas to own this piece of paradise in a middle of growing city. The mature fruit tree garden (high quality figs, grapes, pears, etc.) is a gardener delight. The land has a lot of valuable timber on it and the potential is unlimited. Original home is placed in a way to allow for a panhandle lot to be developed (verify with Saanich municipality if deem important). Close to Camosun College, golf course, lakes and parks. A unique chance to built your legacy family estate.

Priced at
\$1,459,000

Area	Prospect Lake	Age	1980
Bedrooms	4	Taxes	4845
Bathrooms	4	Tax Year	2020
Lot Size	135036	MLS#	871962
Floor Space	3054	Parking	



ANNA STERLOFF

Pemberton Holmes - Westshore

Scan this QR
Code with your
smart phone



(250) 478-0779
anna.sterloff@gmail.com
sterloffrealestate.ca/

103-814 Goldstream Ave
Victoria, V9B 2X7