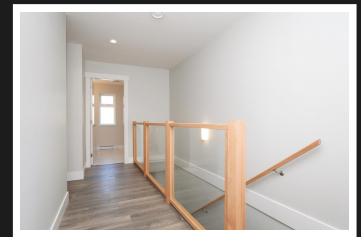
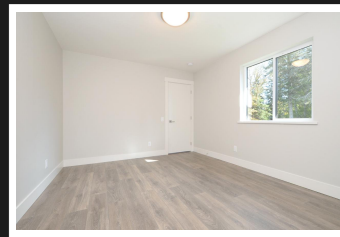
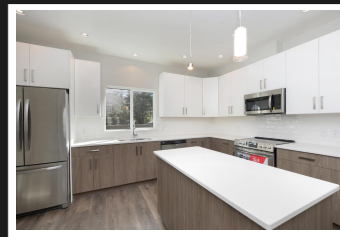


PEMBERTON
HOLMES

· ESTABLISHED 1887 ·

STUNNING NEW BUILD

6861 Eve Grove

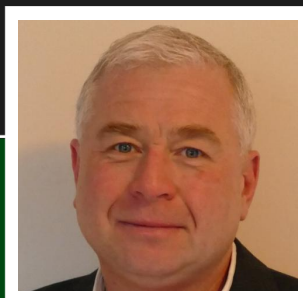


3 Bedroom, 3 Bathroom

Brand new spacious strata duplex built by recent multiple Care Award Winning Builder Clarkston Construction. The main floor features 9' ceilings, gorgeous kitchen with quartz countertops, high end appliance package & pantry, spacious living room with gas fireplace featuring beautiful custom stone work & natural wood mantle. Formal dining, 2 piece bath, laundry room & oversized one car garage. The upper floor features full 4 piece bath & 3 bedrooms including gorgeous master suite with full bath & walk closet w/ custom wood shelving. Super efficient ductless split heat pump will allow you to save on your heating bills and stay cool on those hot summer days. Situated on a flat, fenced easy care lot on a quiet no through street amongst other high quality homes all in a fantastic location near Sooke town core on city water & sewer. Too many other special features to mention here, come for a look & see what separates this gorgeous home apart from the rest.

Priced at
\$499,000

Area	Sooke Vill	Age	2018
Bedrooms	Core	Taxes	1495
Bathrooms	3	Tax Year	2018
Lot Size	3	MLS#	400727
Floor Space	0.15	Parking	Sngl Garage
	1714		



BRENDAN HERLIHY

Pemberton Holmes - Sooke

Scan this QR
Code with your
smart phone



(250) 642-3240
brendan@outwestbc.com
<http://www.outwestbc.com>

2 - 6716 West Coast Rd
Sooke, V9Z 0P7