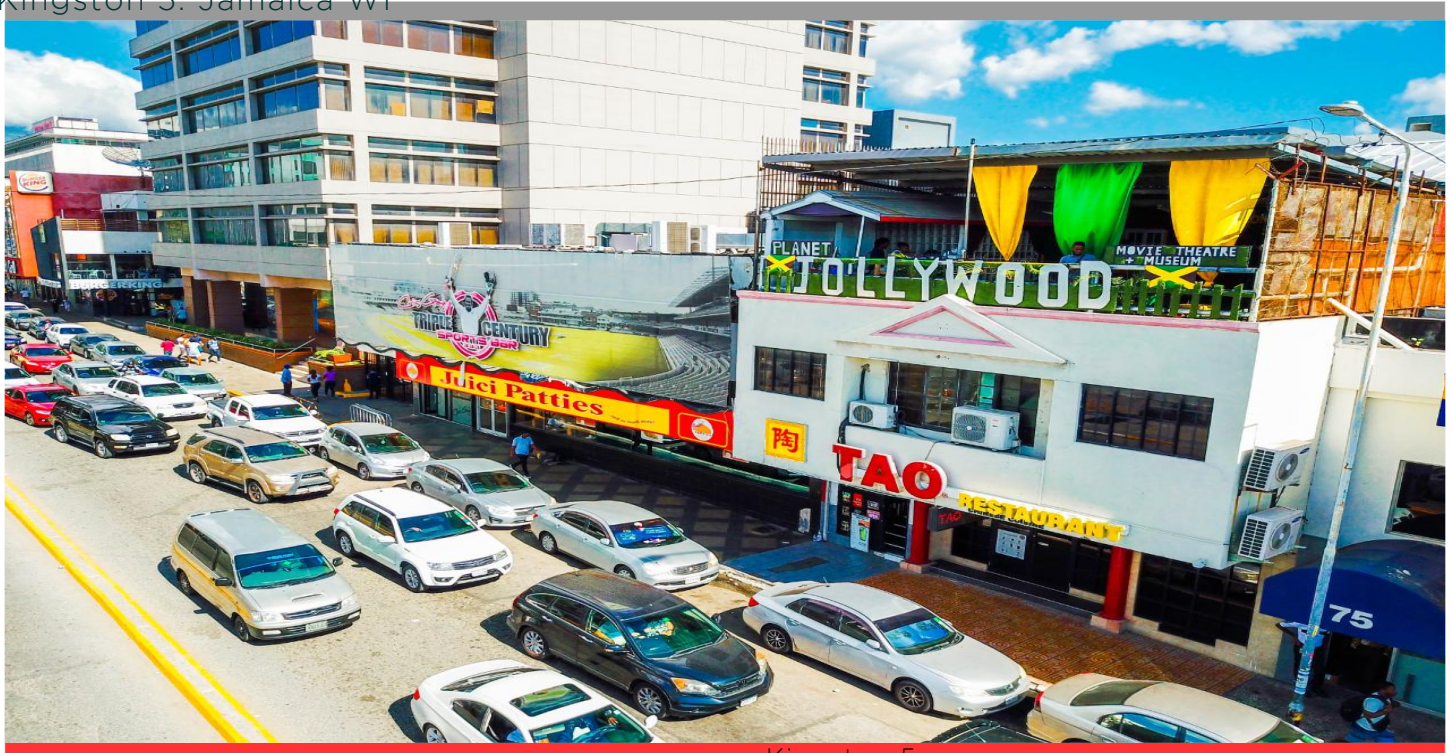


73 Knutsford Boulevard,

US\$1.65mil

Kingston 5, Jamaica WI



Kingston 5
9000



73 Knutsford Blvd,
Kingston 5
Jamaica WI

- 11,200 sq ft
- High visibility three storey building
- Plus Basement
- New Kingston. main road
- Close proximity to the Porsche Dealership, Starbucks, Marriott Hotel, Pegasus Hotel, Chris Gayle Triple Century
- Parking spaces available for rent from the parking garage behind the building

MLS # 45932

DL - 1054

Marlene Williams

MARLENE WILLIAMS REALTY LIMITED

(876) 382-4920

marlenewilliamsrealty@gmail.com

Unit 6a, 2 Seymour Ave, Seymour Park, Kingston 6, Jamaica WI

<https://marlenewilliamsrealty.com>