

Welcome to Your New Home at Parkside Place

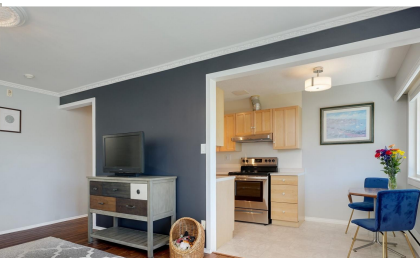


Top floor bright South-facing home

- 2 generously sized bedrooms
- Full-sized laundry room with a sink and a large in-suite storage
- Many updates including engineered hardwood floors, updated bathroom, some newer appliances, and light fixtures.
- Vinyl windows with sliding patio door leading to a large balcony installed in 2023.
- 1 parking stall with the option of renting an additional stall from the strata
- 2 dogs or 2 cats or 1 dog and 1 cat (no size or weight restriction)
- No age restriction
- Common outdoor seasonal pool, basketball court & playground Centrally located & on major bus routes, within walking distance to Tillicum & Uptown Malls

FEATURES

Bedrooms	2
Bathroom	1
Finished SqFt	910
Parking	1
Built	1962
Strata Fee	\$564
Tax Year 2024	\$454,000
Taxes	\$1,842



Mariann Abram*

250-884-6796
yourhome@mariannabramprec.com

Pemberton Holmes Ltd. - Sidney
#107 - 2360 Beacon Ave. Sidney BC V8L 1X3

MLS # 968399

