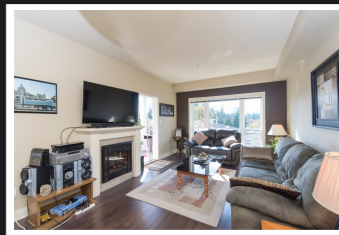
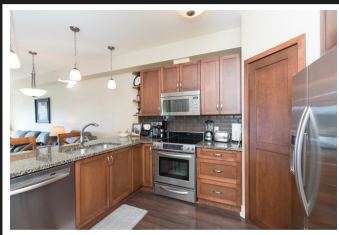


PEMBERTON  
HOLMES

· ESTABLISHED 1887 ·

# SOUTH FACING CORNER SUITE

301-866 Brock Ave

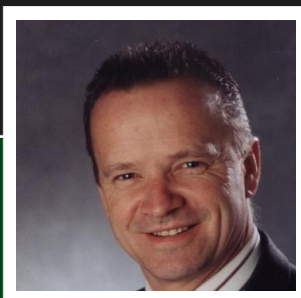


## 1 Bedroom, 1 Bathroom

Gorgeous south facing views await you in this very spacious 1 owner suite located in the Casa Bella Complex. This spotless suite offers a 17 x 12 master bedroom suite, 9 ft ceilings, oversized windows overlooking landscaped tranquil gardens, Olympic Mountains, serenity pond, two water features and meandering walking paths. Top quality features include 6 appliances with Kitchen Aid stainless steel appliances in kitchen, full size front loading washer and dryer, granite counter tops, fireplace, and more. Free gym access in the separate gym with 18 ft glass windows and vaulted ceilings with beautiful views of the park like setting. Private and community function room. Underground secure parking and storage, close to all amenities yet in a quiet residential area away from busy streets. This is an awesome suite come see for yourself.

**Priced at**  
**\$329,000**

Area	Langford	Age	2009
Bedrooms	Proper	Taxes	1302
Bathrooms	1	Tax Year	2018
Lot Size	1	MLS#	400608
Floor Space	0.02	Parking	Underground
	710		



DAVID SCOTNEY

Pemberton Holmes - Cloverdale

Scan this QR  
Code with your  
smart phone



(250) 384-8124  
power@pembertonholmes.com  
www.buyvictoriarealestate.com

150 - 805 Cloverdale Ave  
Victoria, V8X 2S9