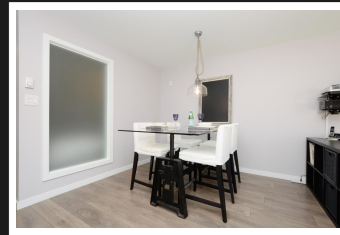
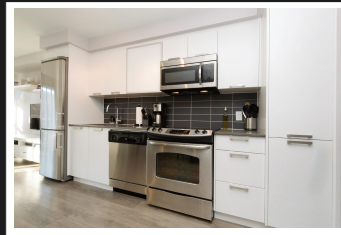


PEMBERTON
HOLMES

· ESTABLISHED 1887 ·

PRIME LOCATION DOWNTOWN!

214-528 Pandora Ave



1 Bedroom, 1 Bathroom

Transient/vacation rental zoning in historic Chinatown! Old Town District is the prime downtown hub for shopping, dining, entertainment – invest in the Union on Pandora. Stunning professionally designed interiors in this beautifully finished suite. Features include stainless steel appliances, wide plank laminate floors, new resin countertops, in suite laundry, parking spot and storage locker. Balcony views of Market Square – make this cute suite your home or revenue investment today! Furniture included except the sectional sofa. See M2M Notes for detail.

Priced at
\$474,800

Area	Downtown	Age	2014
Bedrooms	1	Taxes	2161
Bathrooms	1	Tax Year	2018
Lot Size	0.01	MLS#	400782
Floor Space	577	Parking	Underground



CLAIRE YOO

Pemberton Holmes - Cloverdale

Scan this QR
Code with your
smart phone



(250) 384-8124
claireyoo@shaw.ca
claireyoo.com

150 - 805 Cloverdale Ave
Victoria, V8X 2S9