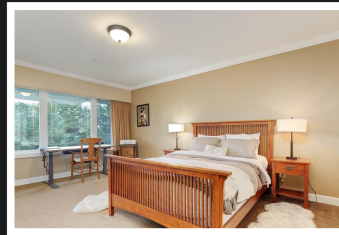
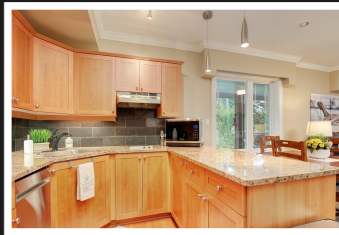
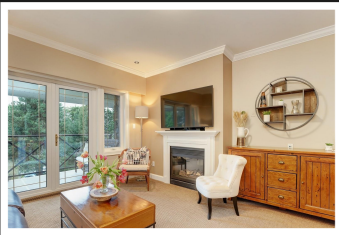


PEMBERTON
HOLMES

· ESTABLISHED 1887 ·

206-2326 HARBOUR RD



Discover tranquil luxury at Miraloma on Harbour Rd, nestled in a serene ocean-front cul-de-sac. This elegant 1 bed, 1 bath condo, with close to 900 sq/ft of living space, boasts a dual-sided gas fireplace, a spa-inspired bathroom, in-suite laundry, and a scenic wrap-around deck. Enjoy the convenience of free heating, secure parking, and bicycle storage. Revel in the array of amenities, featuring a gym with sauna, boardroom, cozy atrium with fireplace, communal kitchen for culinary adventures, and an expansive dining room with bar, perfect for cherished gatherings. Alternatively, relish outdoor moments on the expansive patio overlooking the Heritage gardens complete with gas BBQ. The unit includes a storage locker on the same floor, and luggage/shopping carts. Conveniently located minutes from Sidney, YYJ, and the ferries. No age or rental restrictions apply. Pets welcome with limitations. Embrace seaside living - book your viewing now!



Priced at
\$687,000

Area	Sidney N-East	Age	1999
Bedrooms	1	Taxes	2152
Bathrooms	1	Tax Year	2023
Lot Size	879	MLS#	957886
Floor Space	879	Parking	Single

LISAREDDING

Pemberton Holmes - Sidney

Scan this QR
Code with your
smart phone



(250) 656-3486
lkredding@shaw.ca

107-2360 Beacon Ave
Sidney, V8L 1X3