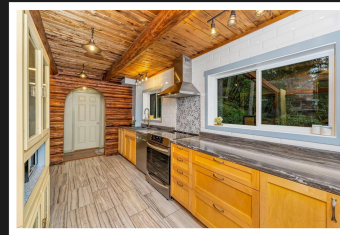


PEMBERTON
HOLMES

· ESTABLISHED 1887 ·

611 Maple Mountain Rd



611 Maple Mountain Rd

One of the original log homes of Maple Bay sits on a hillside and has had extensive upgrades. The sunroom adjacent to the living room is filled with natural light and views of the bay. The living room is a cozy quiet retreat with a floor to ceiling fireplace and views into the surrounding forest to watch the wildlife saunter by. The pullman kitchen overlooks the beautifully landscaped fully fenced grounds and expansive deck are perfect for barbecuing and hosting gatherings. Two office areas are perfect for the semi-retired or work from homes or... The spacious master suite is next to an ensuite waiting for your touch to complete. The second bedroom is perfect for quests. The generous double garage, low-maintenance metal roof and garden shed complete the picture. Located near amenities in the Cowichan Valley, with convenient access to the ocean, pickleball and tennis courts, a dog park, playground, and scenic hiking trails, all mere moments from your front door.



Priced at
\$879,900

Area	East Duncan	Age	1980
Bedrooms	2	Taxes	4987
Bathrooms	2	Tax Year	2024
Lot Size	22651	MLS#	973060
Floor Space	1785	Parking	

PAUL TEDRICK

Pemberton Holmes - Duncan

Scan this QR
Code with your
smart phone



(250) 216-6020
paul@paultedrick.ca

23 Queens Road
Duncan, V9L 2W1