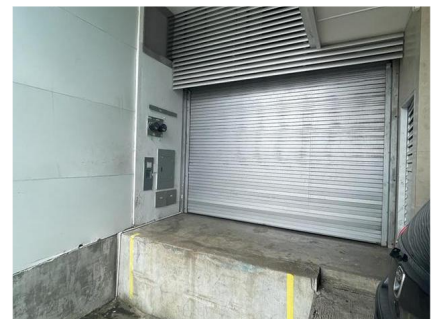
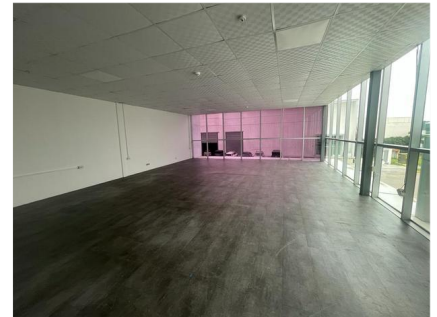


Panama Viejo Business Center Warehouse



G10- Panama Viejo Business Center

\$2,300,000

Two Story 1356 sq meter warehouse on 972 sq meter plot in Panama Viejo Business Center divided into 10A and 10B, it has 10 parking spaces between the two sides, each side has its unloading area with a roll-up door, they have a showroom area, and storage space on the ground floor and first floor, spacious offices, and 3 half baths each. It can be sold complete as well as half of the warehouse. Side 10 A is available for rent with 500 sq meters of storage space between the two floors and 125 meters of office space plus 50 meters of semi-open area and 5 parking spots. It has a 2-ton cargo elevator. \$5,000 rental price.



Michele M. Lasso

+ (507) 6394-6478
mlasso@gestiurispma.com
Parque Lefevre, Casa A-21, Calle
Primera

