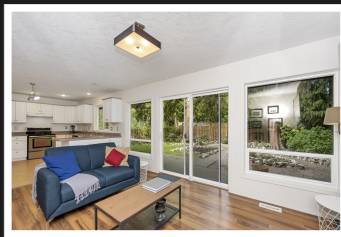
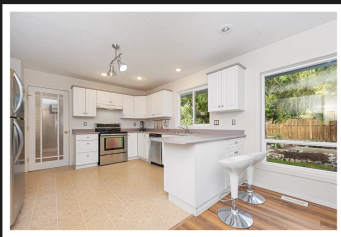


PEMBERTON
HOLMES

· ESTABLISHED 1887 ·



3653 Princess Ave



3653 Princess Ave

Lovely family home in Cowichan Valley with main floor entrance. Kitchen has SS appliances, lots of cabinets with a desk area and is open to the Family room. Family room has huge windows including a patio door to the back yard that lets in tons of sunlight. Living room has woodstove and huge windows. Dining area is inline with living room and has corner window as well as patio doors to the back yard. Upstairs has hardwood floors throughout and updated light fixtures. Primary bedroom is spacious with beautiful walk-in closet organizer with chandelier and large mirror that is included. Two other bedrooms main bathroom and primary ensuite complete the upper floor. Vinyl windows and 200 amp service. Fully fenced back yard with berry trees. Walk to Cobble Hill Village and Cobblestone Pub. Close to Cobble Hill Mountain and Valleyview Center. RV parking.



Priced at
\$699,000

Area	Cobble Hill	Age	1995
Bedrooms	3	Taxes	3290
Bathrooms	3	Tax Year	2020
Lot Size	6717	MLS#	886397
Floor Space	1654	Parking	

SANDRA CARSWELL

Pemberton Holmes - Duncan

Scan this QR
Code with your
smart phone



(250) 746-8123
sandra@sandracarswell.ca

23 Queens Road
Duncan, V9L 2W1