

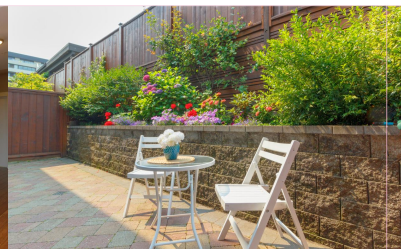
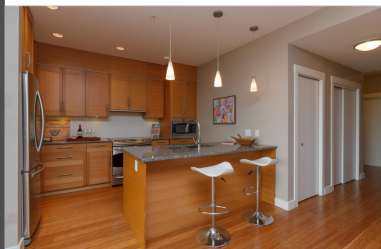
Sidney

\$ 650,000

103-9820 Seaport Pl



Area	Sidney North-East
Bedrooms	2
Bathrooms	2
Lot Size	0.03
Floor Space	1171
Age	2012
Taxes	2881
Tax Year	2016
MLS#	381761
Parking	1 Space, Underground - Secure, Covered Parking Attached



2 Bedroom Condo!

Beautiful two bedroom, two bathroom condo in the heart of Sidney by the Sea. This immaculate home is a perfect option for those looking to downsize, or adopt a low-maintenance lifestyle. The garden level floorplan provides ease of access, with wheelchair accessibility throughout. The open living, dining and kitchen areas are perfect for entertaining, and the front patio is a great place to sit and enjoy the fresh sea air. The master bedroom includes a large walk-through closet and 5pc ensuite with soaker tub and separate shower. Both bedrooms open to a completely private back patio with lovely flower gardens. Convenient in-suite laundry and a private underground garage, accessible by an elevator straight to the unit. Steps from the waterfront, with restaurants, cafes, shops, and attractions all within walking distance. Enjoy the oceanside life in this charming community, just a short drive from Victoria.



To view interactive floor plans scan this QR code with your smart phone

Bradley Stokes-Bennett
The Condo Group, Burr Properties Ltd.

(250) 382-6636
K-3388 Douglas St
bradstokesrealestate@gmail.com

