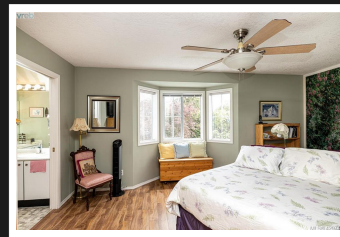


**PEMBERTON
HOLMES**

· ESTABLISHED 1887 ·



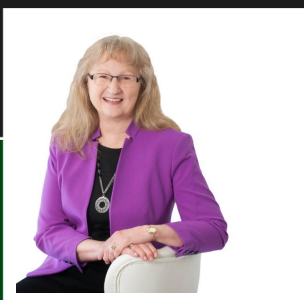
34-2120 MALAVIEW AVE



Absolutely a must see! This lovely home has so many great features that you will not want to miss out on this Townhome. From the time you enter the walkway through to the Foyer, with the 17'10" vaulted ceiling, you will be impressed with the size of the rooms of this well cared for home. The Kitchen has a Butler's Pantry and eating area with sliders to the south facing private patio with an amazing garden area where you will enjoy sun and nature. The in-line Dining/Living room can be configured to suit your needs - and you will appreciate the gas fireplace in the Living room which overlooks the private back yard. Upstairs you will find the Master Suite with a walk-in closet and 5 piece ensuite plus a second Bedroom and 4 piece Bath. Mobility issues? No worries â€" there is an electric chair rail going upstairs plus there is a walk-in tub that has been installed. This is a great home, in excellent condition at a great price!

**Priced at
\$599,000**

| | | | |
|-------------|---------------|----------|--------|
| Area | Sidney North- | Age | 1993 |
| Bedrooms | East | Taxes | 2582 |
| Bathrooms | 2 | Tax Year | 2019 |
| Lot Size | 3 | MLS# | 429741 |
| Floor Space | 0.04 | Parking | Single |
| | 1710 | | |



INEZ LOUDON, FRI

Pemberton Holmes - Sidney

Scan this QR
Code with your
smart phone



(250) 656-3486
inezloudon@telus.net
<http://www.inezloudon.com>

107 - 2360 Beacon Ave
Sidney, V8L 1X3