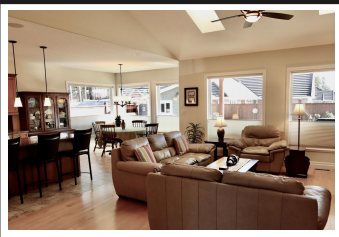


PEMBERTON  
HOLMES

· ESTABLISHED 1887 ·

# 991 CANTEBURY PLACE

\$749,000



## 991 Canterbury Place, Qualicum Beach

Welcome to the latest phase in the Chartwell community. This impressive home was built by Paul Turner of Windward Construction and the enduring quality is obvious. From the concrete roof shingles to the Hardi Plank siding, heat pump with natural gas furnace as backup, and hot water on demand, this home was built with exacting standards. Over height doors and closets, solid maple cabinetry, granite counters, and solid Beech flooring, are just some of the quality finishes used throughout. Lovingly maintained this one owner home shows like day it was built. The peaceful and private backyard boasts a covered patio to relax and enjoy. Space to park the RV or boat! Just blocks from Eaglecrest Golf Course, the beach, and minutes to downtown Qualicum Beach and the French Creek marina. There is nothing to do here except move in and enjoy the flowering Plum trees that grace the yard and the Qualicum Beach lifestyle! Homes in this phase rarely become available, so act quickly!

**Priced at**  
**\$749,000**

Area	Z5 Qualicum	Age	2007
Bedrooms	Beach	Taxes	4066
Bathrooms	3	Tax Year	2019
Lot Size	2	MLS#	466340
Floor Space	0.21		



ALANA JACKSON

Pemberton Holmes - Parksville

Scan this QR  
Code with your  
smart phone



(250) 248-8801  
lana@midislandproperties.com  
www.midislandproperties.com

135 Alberni Hwy  
Parksville, V9P 2G6