



**NANCY VIEIRA**  
Pemberton Holmes - Sooke

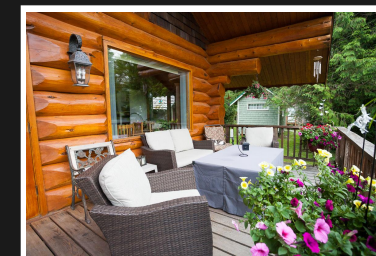
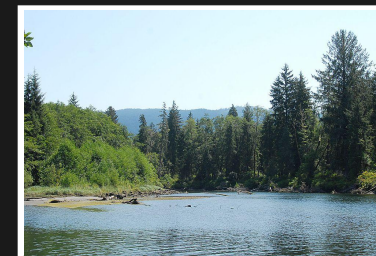
(250) 514-4750      (250) 642-7463

2 - 6716 West Coast Rd  
Sooke

[info@nancyvieira.com](mailto:info@nancyvieira.com)  
<http://www.nancyvieira.com>



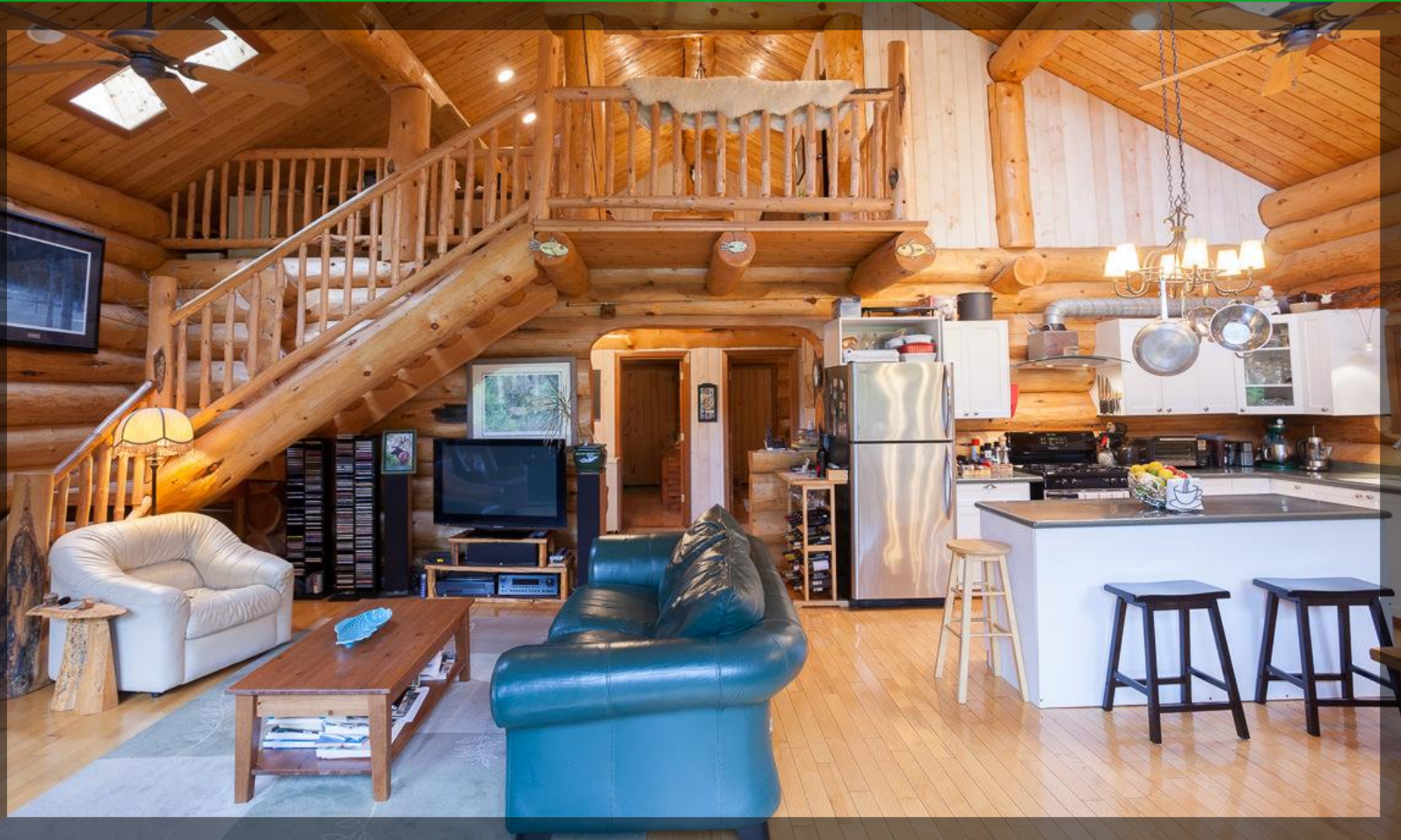
**16608 Island Rd**



**NANCY VIEIRA**  
Pemberton Holmes - Sooke

Priced at \$775,000

6.89 Acre Riverside Paradise



16608 Island Rd

Looking for Paradise and Revenue? Property includes income cabins and a beautifully designed 2,174 sq. ft. log home with a gourmet kitchen with Corian counter tops, cozy living and dining area and 2 large bedrooms on main floor with doors to outside deck. Open cathedral ceiling with an Upstairs open-master bedroom with office area, large walk-in closet, 4 pc ensuite and private deck. Enjoy sitting in the hot tub just steps from the San Juan River and watch the wildlife! Privacy plus natural beauty! Comes with a 36x29 garage/workshop with 12ft ceiling, camping areas, a seasonal pond, fully furnished cabins - all this on 6.89 riverside acres. Only two hours away from Victoria and only minutes from the town of Port Renfrew. Living the good life!

16608 ISLAND RD

Area	Port Renfrew	Age	2004
Bedrooms	3	Parking	12 Spaces,
Bathrooms	2	Taxes	2753
Lot Size	6.89	Tax Year	2015
Floor Space	2174	MLS#	367392



NANCY VIEIRA  
Pemberton Holmes - Sooke



Scan this QR Code with your smart phone

(250) 642-3240  
info@nancyvieira.com  
<http://www.nancyvieira.com>

2 - 6716 West Coast Rd  
Sooke