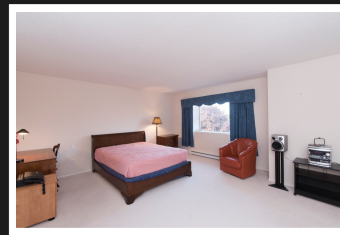


PEMBERTON
HOLMES

· ESTABLISHED 1887 ·

GORDON HEAD AREA

1835 Serenity Pl

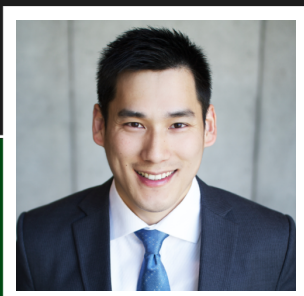


BEDROOMS 4, BATHROOMS 3

Well situated in a quiet cul-de-sac in an ideal neighbourhood of Gordon Head area. Entering into the main floor of this spacious house, you are welcomed by the double height entrance and will find a cozy 12 ft ceiling living room & formal dining, well-built kitchen with a window overlooking beautiful backyard, and lots of dining spaces. There is also a family room with a great size for your loved ones to spend precious time together! The upper floor offers four bedrooms - the 18'x15' Master Bedroom has a wonderful walk in closet leading you to the 4 piece ensuite. Large fenced in back yard with a large patio to host family gathering. Remember to look for some distance ocean view. This is a lovely house for your entire family! Come make this your Destined Home today!

Priced at
\$1,195,000

Area	Gordon Head	Age	1992
Bedrooms	4	Taxes	5321
Bathrooms	3	Tax Year	2017
Lot Size	0.24	MLS#	397546
Floor Space	2691	Parking	2 Spaces



DANIEL HSU
Pemberton Holmes - Cloverdale

Scan this QR
Code with your
smart phone



(250) 384-8124
daniel@destinedhome.com
<http://www.destinedhome.com>

150 - 805 Cloverdale Ave
Victoria, V8X 2S9