

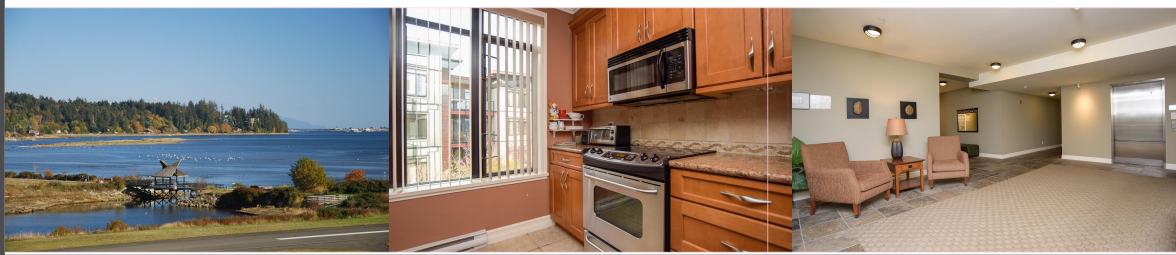
337-2300 Mansfield Drive

\$ 349,900

337-2300 Mansfield Drive



Area	Z2 Courtenay
Bedrooms	City
Bathrooms	2
Floor Space	2
Age	1000
Taxes	2007
Tax Year	2018
MLS#	447944
Parking	1 Space, Underground Garage



337-2300 Mansfield Drive

Welcome to Trumpeters Landing. With open concept living and it's well managed complex, this unit is a great find. It's centrally located in the City of Courtenay, with an excellent walking score. It's close to all amenities including shopping, restaurants and the popular Airpark path - perfect for a lovely scenic walk. This unit offers two bedrooms and two bathrooms, with the master bedroom featuring a large 3-piece ensuite including a walk-in shower. Standing on the large patio you can take in the beautiful mountain and city views, as well as the impressive landscaping surrounding the complex. Other features include underground parking, in unit laundry and a guest suite in the building to allow for your company to have a comfortable stay. Don't miss out, view it today!



To view interactive floor plans scan this QR code with your smart phone

Samuel Ennis*

RE/MAX Ocean Pacific Realty

(250) 334-9900

2230a Cliffe Ave.
samuel.ennis@remax.net
www.samuelennis.ca

