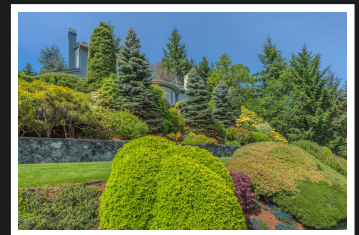
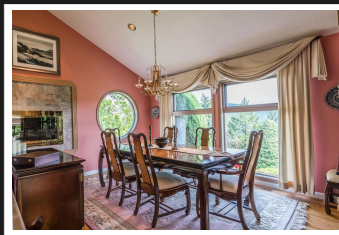


PEMBERTON
HOLMES

· ESTABLISHED 1887 ·

MAPLE BAY GARDEN PARADISE

6526 Marine Cres



Private, Ocean views, on 0.866 acres

MAPLE BAY - Executive California style with bespoke architectural designed curves and walls! Ocean views in this elegant split multi-level home in Marine View Estates. Grand entrance is impressive with spiral staircase and marble flooring. Formal living room shares a corner fireplace with the dining room. Dining room features a port hole feature window and ocean views. Spacious kitchen has timeless lacquered cabinets galore! Pot lighting and arched ceiling light fixture light up the work space. Curved row of full height windows to take in ocean views. Family room off kitchen has beautiful and efficient Cenergy wood burning fireplace. Patio doors to wrap around deck with hot tub. Huge master floor features two skylights, two closets (one is walk in) and separate office, nursery or wardrobe room. 5 piece Ensuite with jetted soaker tub. Two guest bedrooms and a multipurpose room. Fully fenced tiered mature gardens, and natural landscaping .

Priced at
\$929,000

Area	Z3 East
Bedrooms	Duncan
Bathrooms	3
Lot Size	3
Floor Space	0.87
	3383

Age	1990
Taxes	6279
Tax Year	2018
MLS#	456761
Parking	Double garage



SANDRA
CARSWELL
Pemberton Holmes Duncan

Scan this QR
Code with your
smart phone



(250) 746-8123
sandra@sandracarwell.ca
<http://sandracarwell.ca>

23 Queens Road
Duncan, V9L 2W1