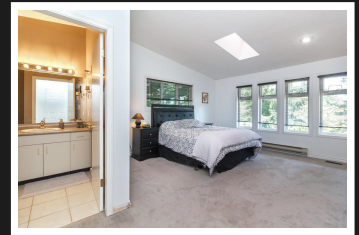


PEMBERTON
HOLMES

· ESTABLISHED 1887 ·

UNIQUE HOME A MUST SEE!

2836 Admirals Rd



BEDROOMS 7 BATHROOMS 5

A unique property with so many opportunities..wander down the long, treed driveway..arrive at the guest cottage . Notice the apple trees to the left...palm trees straight ahead...get your first glimpse of the lovely 1977 home that has impressive size rooms, a great layout, a large suite PLUS bonus rooms downstairs. The one bedroom suite could be expanded into a two bedroom, 2 bath or use the extra rooms for you and your family. There is a back deck and yard for the main house, a side yard for the downstairs tenants. The property is over half an acre, all mature landscaping. The cottage is furnished and is currently run as a successful short term rental. Half a block from the Gorge walkway and playground. Only fifteen minutes to downtown. This is a very special property, a hidden oasis you will never want to leave...

Priced at
\$1,395,000

Area	Portage Inlet	Age	1977
Bedrooms	7	Taxes	4308
Bathrooms	5	Tax Year	2018
Lot Size	0.54	MLS#	395201
Floor Space	4045	Parking	10 Spaces



LORI KERSTEN

Pemberton Holmes - Cloverdale

Scan this QR
Code with your
smart phone



(250) 384-8124
lorijkersten@gmail.com

150 - 805 Cloverdale Ave
Victoria, V8X 2S9