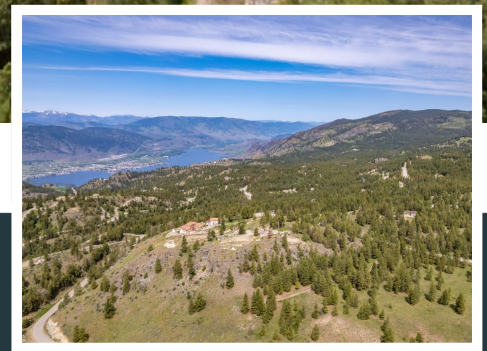
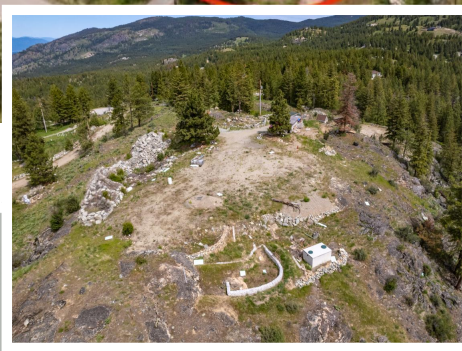
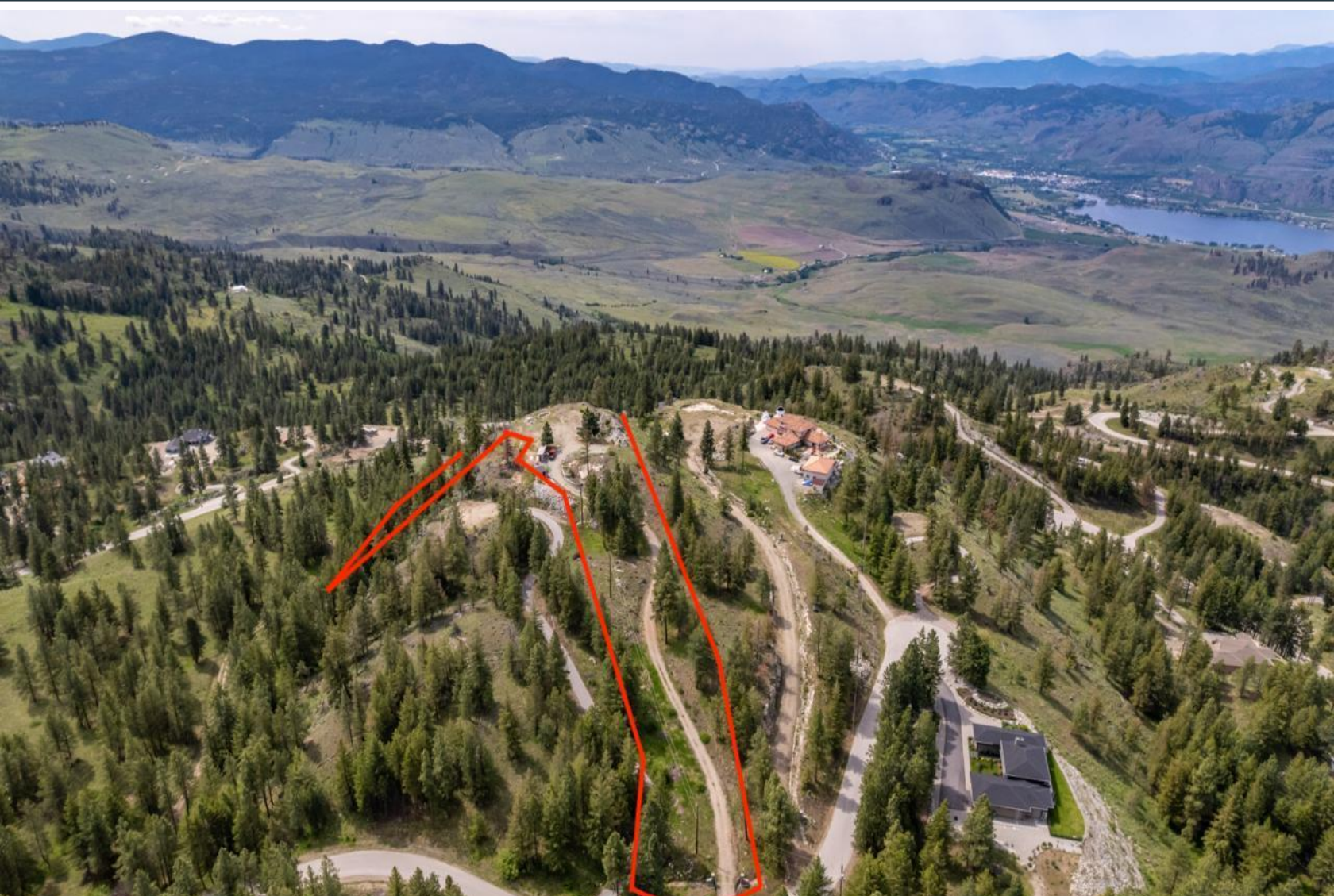


210 Peregrine Place

\$ 649,000

MLS # 10310127



Michelle Fritz

PERSONAL REAL ESTATE CORPORATION

250-809-5454

MICHELLEFRITZ@REMAX.NET
WWW.OSOYOOSFORSALE.COM

RE/MAX
REALTY SOLUTIONS

8507A MAIN ST,
OSOYOOS, BC V0H 1V0



GORGEOUS MOUNTAIN, VALLEY AND LAKE VIEWS! Build your ideal home on this 3.9-Acre Lot just waiting to make your dreams a reality. Peregrine subdivision offers some of the most breath taking South, South/West views of the mountain ranges, Osoyoos Lake and the valley below. This great property includes Gated entry, Existing Rock Retaining Walls, 2 Drilled Wells, Hydro to Lot, and Fire Hydrant nearby. English Cottage Style Rancher building plans available. Just a short 20-min drive East of Osoyoos, you can enjoy the tranquility that the mountains provide with a community feel being part of the Anarchist Mountain neighbourhood. This property is surrounded by Walking, Hiking, and Biking Trails, as well as Local Ski Hills, just to name a few activities friends and family can enjoy!

Area	Osoyoos Rural	Age	1987
Bedrooms		Taxes	2023
Bathrooms		Tax Year	Well
Lot Size	3.9	Water	Septic Tank and Field
Floor Space		Sewer	Electricity Available
		Utilities	



Michelle Fritz
PERSONAL REAL ESTATE CORPORATION

250-809-5454

MICHELLEFRITZ@REMAX.NET
WWW.OSOYOOSFORSALE.COM

RE/MAX
REALTY SOLUTIONS

8507A MAIN ST,
OSOYOOS, BC V0H 1V0