

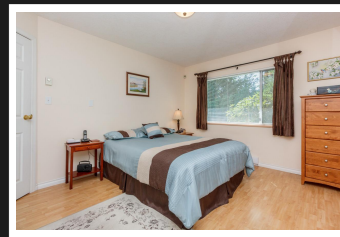
PEMBERTON  
HOLMES

· ESTABLISHED 1887 ·

Meadowlark Place  
4120 Interurban Rd.

# DELIGHTFUL TOWNHOUSE

18-4120 Interurban Rd



## BEDROOMS 2, BATHROOMS 2

This delightful one-level townhouse offers easy-care comfortable living...featuring 2 bedrooms and 2 full bathrooms. Warm, cozy living room is enhanced with an electric fireplace, inviting entertainment-sized dining room, efficiently designed kitchen with impressive breakfast nook...a great place to read while enjoying your morning coffee. Enjoy the marvelous fenced garden patio...a very special feature!!! Attached single car garage. Bonus...2 dogs or 2 cats allowed!!! Meadowlark Place is a very impressive place to call home.

**Priced at**  
**\$520,000**

Area	Strawberry v	Age	1988
Bedrooms	2	Taxes	2335
Bathrooms	2	Tax Year	2018
Lot Size	0.05	MLS#	399344
Floor Space	1193	Parking	1 Space



MARY BEAUMONT

Pemberton Holmes - Cloverdale

Scan this QR  
Code with your  
smart phone



(250) 384-8124  
mary@marybeaumont.com  
<http://www.marybeaumont.com>

150 - 805 Cloverdale Ave  
Victoria, V8X 2S9