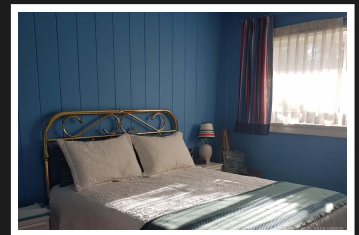
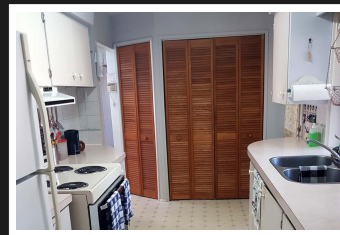


PEMBERTON  
HOLMES

· ESTABLISHED 1887 ·

# 359 BERNARD AVE

\$375,000



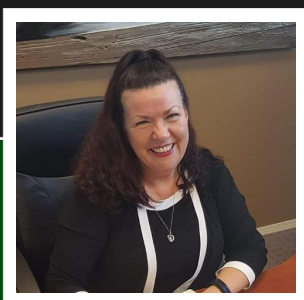
## 359 Bernard Ave, Parksville

Perfect little home for starter or investment. Excellent location within walking distance to schools, medical clinic, walking trails, dog park, the down town core, all local amenities and the beautiful Parksville Beach. The new Quality Foods will be built just steps away from this home. This older, well looked after home shows very well, is neat and tidy and is on a 2 - 3 ft crawl space (exterior access) with a couple of outbuildings. Expansive, easy care back yard is great for gardens (has a couple raised beds). There are 3 fruit trees (Cherry, Crabapple & Apple) as well as other flowering trees. Beautiful river rock, pellet stove fireplace (Wett Cert) is definitely a cozy, focal point. Roof is only 2 years old. Some new windows in 2009. Fully enclosed back porch with sliders to back deck. Lots of room for that growing family or small enough to be looked after by seniors. Easy to show, Quick possession possible.

**Priced at**  
**\$375,000**

Area	Z5 Parksville
Bedrooms	3
Lot Size	0.17
Floor Space	1095

Age	1955
Taxes	2127
Tax Year	2019
MLS#	463640



LISA M (MOULATSIOTIS)

Pemberton Holmes - Parksville

Scan this QR  
Code with your  
smart phone



(250) 248-8801  
LisaMIslandRealtor@gmail.com

135 Alberni Hwy  
Parksville, V9P 2G6