

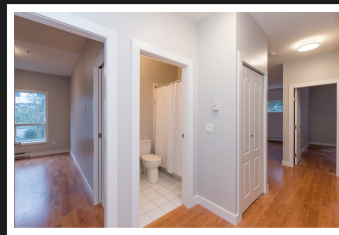
PEMBERTON
HOLMES

· ESTABLISHED 1887 ·

1371 HILLSIDE

UPDATED PENTHOUSE

PH5-1371 Hillside



BEDROOMS 2, BATHROOMS 2

Recently updated penthouse suite features beautiful high ceilings and gas fireplace to cozy up to. Arguably the best unit in the building, this south-west facing top floor corner unit offers two sky lights to enjoy natural light and creates a bright and spacious, quiet atmosphere. Wake up in the morning to get ready with HIS and HER closets and an en suite bathroom. You can enjoy hassle-free laundry with in-suite stacked washer/dryer and know your car is safe and sound in the secure underground parking lot. Call this spectacular quiet oasis home before someone else does. Quick completion possible for new mortgage rules. Please click on the multimedia links to view all HD photos, 3D walk through, floor plans and much, much more.

Priced at
\$400,000

Area	Oaklands	Age	1995
Bedrooms	2	Taxes	1948
Bathrooms	2	Tax Year	2017
Lot Size	1054	MLS#	
Floor Space	1036	Parking	Underground



CHRIS COCHRANE

Pemberton Holmes - Cloverdale

Scan this QR
Code with your
smart phone



(250) 384-8124
chris@forsaleinvictoria.com
<http://www.WeTradeHomes.com>

150 - 805 Cloverdale Ave
Victoria, V8X 2S9