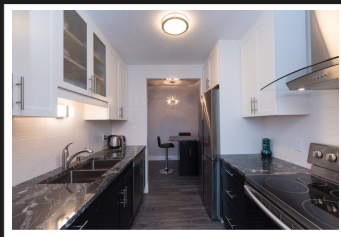


PEMBERTON  
HOLMES

· ESTABLISHED 1887 ·

# TOP FLOOR CORNER PENTHOUSE

401-1025 Fairfield Rd



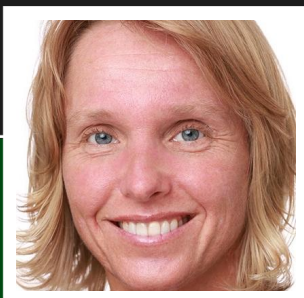
## 2 BEDROOMS, 2 BATHROOMS

Fully renovated 2 bedroom, 2 bathroom, top floor corner Penthouse suite - the largest in the building at 1308 SF plus enclosed sunroom and 2 storage rooms (1693 SF total per strata plan.) All brand new throughout! The kitchen features granite counters, new cabinets, subway tile backsplash, stainless steel appliances, dishwasher and built-in breakfast nook. Both bathrooms are tastefully updated and you will love the quality laminate flooring found throughout the home. Spectacular west view over the city from the master and large picture windows in the living room & dining area. Covered secured underground parking, and your heating is included in the monthly strata. Cat is welcome as are those owner occupants aged 19+. Walk to Beacon Hill Park, Dallas Road waterfront, the vibrant Cook Street Village, downtown, the Inner Harbour, James Bay & more! This is a once in a lifetime opportunity! 3D Tour & Floor plan avail.

**Priced at**  
**\$449,800**

Area	Fairfield West
Bedrooms	2
Bathrooms	2
Lot Size	0.04
Floor Space	1308

Age	1974
Taxes	1935
Tax Year	2017
MLS#	386243
Parking	1 Space



**DIANA WINGER\***

Pemberton Holmes - Cloverdale

Scan this QR  
Code with your  
smart phone



(250) 384-8124  
dwinger@mac.com  
<http://www.HomeVictoria.com>

150 - 805 Cloverdale Ave  
Victoria, V8X 2S9