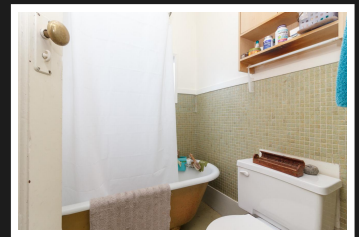


PEMBERTON
HOLMES

· ESTABLISHED 1887 ·

1557 OAKLAND AVE



Location, Location, Location & this one has it in spades. Love & enjoy it as it is, a wonderful family home in a great area, or as the perfect spot for you to follow the trend by changing out the older homes for new builds. Sun soaked lot that offers rear yard, secondary lane access, literally a stones throw to Hillside, Mayfair, Uptown, Downtown, UVIC & Camosun, all within minutes of this 1913 home. Character accents you would expect, woodwork, wainscoting, hardwood floors, clawfoot tub, large kitchen with eating space, covered patio overlooking the level, south facing backyard. Mud room entry area, plus a full unfinished basement for storage or workshop, lots of room for the hobbyist here. Upgraded 200 amp electrical service, newer roof, furnace & hotwater tank. Many years of great memories & happiness have been created here by this family. This is a much sought after location that is hard to beat. Get ready to start packing.

Priced at
\$680,000

Area	Oaklands
Bedrooms	3
Bathrooms	1
Lot Size	0.11
Floor Space	1495

Age	1913
Taxes	3268
Tax Year	2019
MLS#	415294
Parking	1 Space



ANN WATLEY

Pemberton Holmes - Sidney

Scan this QR
Code with your
smart phone



(250) 656-3486
ann@annwatley.com
<http://www.annwatley.com>

107 - 2360 Beacon Ave
Sidney, V8L 1X3