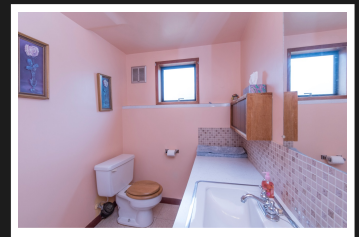


PEMBERTON
HOLMES

· ESTABLISHED 1887 ·

FAMILY HOME IN SAANICHTON

7494 East Saanich Rd



BEDROOMS 5, BATHROOMS 2

First time on the market in 46 years and the pride of ownership is evident. The home is set well off the street & features 5 bedrooms 2 bathrooms, a fully self contained 1 or 2 bedroom inlaw suite, plus a large workshop that could also be converted into living space. All the rooms are spacious in design & accented with lovely hardwood floors. There is a huge country size kitchen with an adjacent dining room that rolls right into the massive living room which all makes for a tremendous family home. The 3rd bedroom up has been converted into the laundry room but can easily be turned back by removing the washer and dryer and putting them back downstairs. There have been several upgrades over the years with a newer roof, a heat pump, drains cleaned and regular maintenance. Wait till you see the south facing, .59 of an acre (111' x 235') flat, usable property that has a small barn/workshop, & a few storage sheds c/w a lovely garden sitting area.

Priced at
\$789,000

Area	Saanichton	Age	1972
Bedrooms	5	Taxes	3118
Bathrooms	2	Tax Year	2018
Lot Size	0.59	MLS#	397730
Floor Space	2780	Parking	20 Spaces



DAVID SCOTNEY

Pemberton Holmes - Cloverdale

Scan this QR
Code with your
smart phone



(250) 384-8124
power@pembertonholmes.com
www.buyvictoriarealestate.com

150 - 805 Cloverdale Ave
Victoria, V8X 2S9