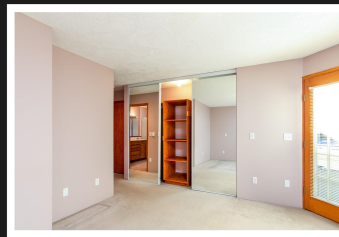
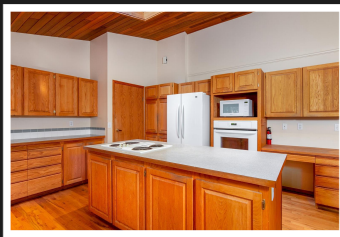
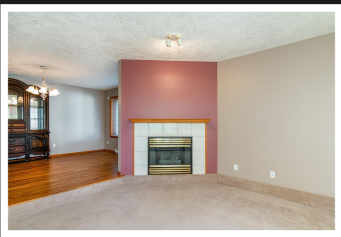


PEMBERTON
HOLMES

· ESTABLISHED 1887 ·

2500 LODGEPOLE RD



This home was custom built in 1994 by the previous owner and is very unique with over 2,400 sq. ft. on one level. You will appreciate the well thought out floor plan - from the formal dining room and sunken living room upon entering via the covered entrance - to large open kitchen with family room. 3 generous bedrooms including Primary with 5 piece ensuite, 2 closets (1 walk-in) and French doors to private patio. The wood stove in the family room, and oak cabinets in the kitchen, are very relaxing as you prepare meals and entertain. So many great features of this home and an extra bonus 1 bed 1 bath additional accommodation with it's own private entrance and patio making this a 4 bed home! Situated on almost half an acre, there is plenty of room for parking your RV or boat in addition to the oversized double attached garage. An easy commute to Victoria with Park and Ride across the road and close proximity to Mill Bay Ferry and shopping.



Priced at
\$1,099,000

Area	Mill Bay	Age	1994
Bedrooms	4	Taxes	3359
Bathrooms	3	Tax Year	2021
Lot Size	18083	MLS#	901016
Floor Space	2407	Parking	Attached

INEZ LOUDEN, FRI

Pemberton Holmes - Sidney

Scan this QR
Code with your
smart phone



(250) 656-3486
inezlouden@telus.net

107-2360 Beacon Ave
Sidney, V8L 1X3