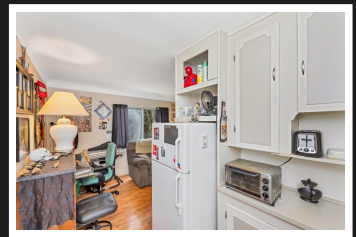


PEMBERTON
HOLMES

· ESTABLISHED 1887 ·

VICTORIA WEST HOME

1322-1324 Burleith Cres



1322-1324 Burleith Cres

location location location! Front home has 3 bedrooms, formal dining room and lovely large family room, and tons of charm. The suite is a 1 bedroom super cute and functional space currently rented for \$850 per month with a long term tenant hoping to stay. Ideal for family home at front with the basement awaiting design your ideas. This property sits on a flat 6000 sq ft lot with tons of light in an incredible location walkable to everything! This is a great investment with the right ideas and sweat equity to make it your dream home or fantastic income property surrounded by stately homes just epitomizing Old Victoria at her best. Contact your realtor to view today!

Priced at
\$899,000

Area	Victoria West	Age	1947
Bedrooms	4	Taxes	4015
Bathrooms	2	Tax Year	2020
Lot Size	6000	MLS#	869089
Floor Space	2146	Parking	



HEIDI STIEG

Pemberton Holmes - Westshore

Scan this QR
Code with your
smart phone



(250) 478-0779
heidi@heidistieg.com
www.heidistieg.com
103-814 Goldstream Ave
Victoria, V9B 2X7