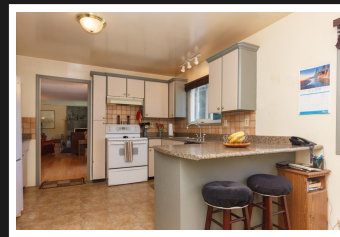
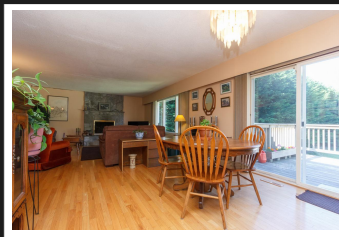
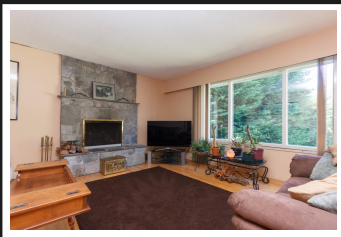


PEMBERTON
HOLMES

· ESTABLISHED 1887 ·

2 HOUSES FOR THE PRICE OF 1

2178 Townsend Road



2178 Townsend Road

WOW... Location the Sooke Town Core! Extended Family's this is your chance lots of room for everybody all on a flat 1/2 acre, private backyard with lots of trees and your own fire pit. 2 HOUSES FOR THE PRICE OF 1, with lots of room for adding value in the main house by finishing the basement! Newer roof on the main both homes are on municipal water and sewer. Investors take a look lots of money to be made in rentals, this home features 3 bedrooms up, full partially finished basement down with its own entrance. Huge 29x12 Deck off your dining room looks over your land which backs on to more green space. BONUS 5 year old detached 674 sq/ft one bedroom cottage with a 24 X 26, 6'1" ceiling basement under talk about plenty of storage.

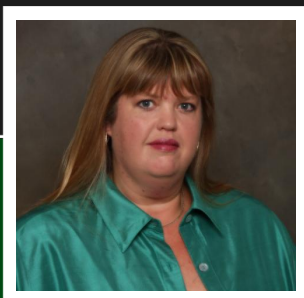
Priced at
\$539,000

Area
Bedrooms
Bathrooms
Lot Size
Floor Space

Sooke Vill Core
4
4
0.5
2654

Age
Taxes
Tax Year
MLS#
Parking

1976
4249
2016
379351
Carport



STACEY SCHARF

Pemberton Holmes - Sooke

Scan this QR
Code with your
smart phone



(250) 889-5994
sascharf@shaw.ca
www.staceyscharf.com

2 - 6716 West Coast Rd
Sooke, V9Z 0P7