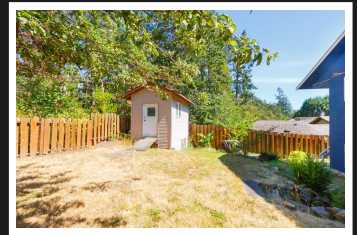
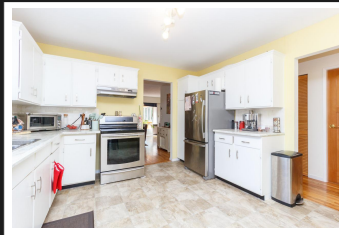
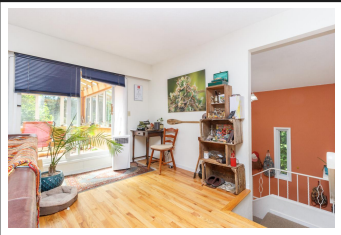


PEMBERTON  
HOLMES

· ESTABLISHED 1887 ·

# SEMI-WATERFRONT FLORENCE LAKE HOME

2591 Florence Lake Rd

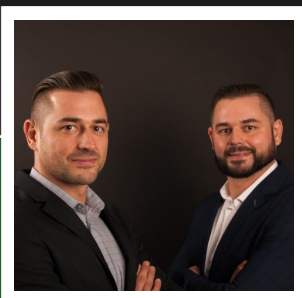


## 2591 Florence Lake Rd

SEMI-WATERFRONT bring your CANOE OR KAYAK. This BEAUTIFULLY UPDATED 5 bedroom BI-LEVEL offers GLEAMING HARD WOOD FLOORS, FIREPLACE and LARGE SUNNY ENCLOSED SUN ROOM. The home also FEATURES a LARGE BRIGHT UPDATED 2 bedroom IN-LAW SUITE with its own FIREPLACE AND PATIO. The CHOICE LOCATION across from FLORENCE LAKE has GREAT VIEWS AND EASY ACCESS to the lake from the WHARF right out front. It's just short drive to all the BIG BOX STORES, SCHOOLS and RECREATION. Hurry this home is UNIQUE and a CHOICE LOCATION.

**Priced at**  
**\$774,900**

Area	Florence Lake	Age	1976
Bedrooms	5	Taxes	3090
Bathrooms	2	Tax Year	2019
Lot Size	7900	MLS#	845482
Floor Space	2344	Parking	6 Spaces



AARON & DARRON HAMBLEY

Pemberton Holmes - Westshore

Scan this QR  
Code with your  
smart phone



(250) 478-0779  
adhambley@gmail.com  
<http://www.adhambley.com>

103 - 814 Goldstream Ave  
Victoria, V9B 2X7