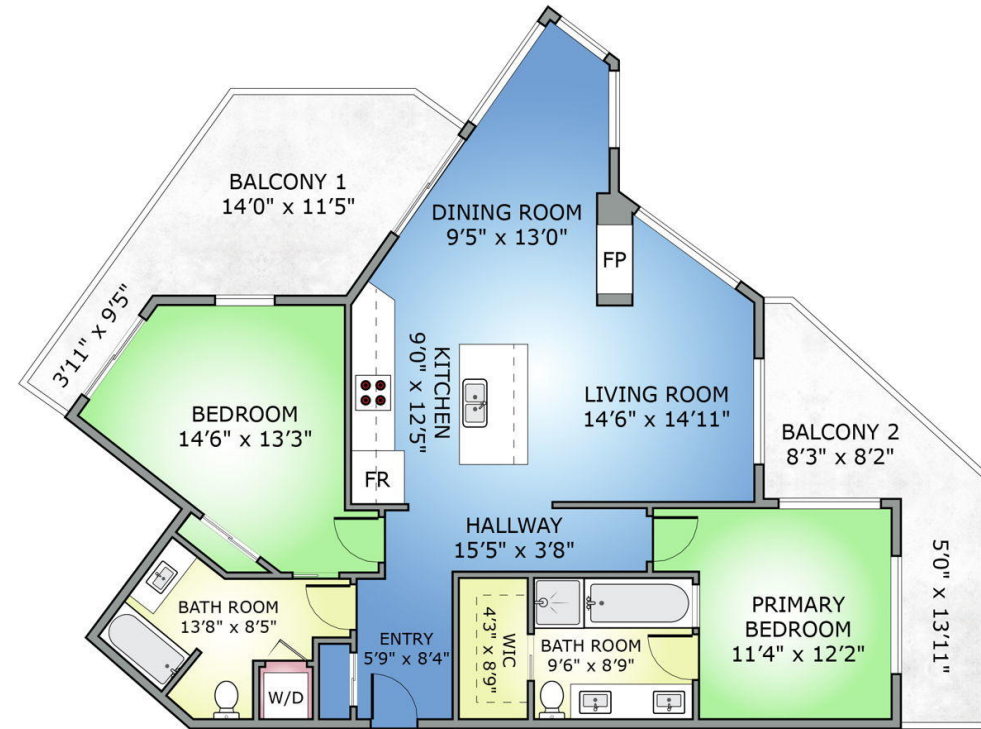


#201 - 2850 ALDWYND RD



SINGLE LEVEL
1107 SQ.FT.
CEILING HEIGHT: 8'11"

HOUSE	FINISHED	OTHER AREAS	
SINGLE LEVEL	1107	BALCONY 1	178
TOTAL	1107	BALCONY 2	138

NORTH



RESHOT.CA MEASURED 10/07/2024
Email: info@reshot.ca

DOCUMENT PREPARED FOR THE EXCLUSIVE USE OF
ANDREW PLANK



Property details are reliable, though their accuracy isn't guaranteed. Purchasers should confirm measurements if needed.

MODERN TOOLS

old-fashioned service

I love helping people buy & sell homes. With a genuine passion for assisting others, I leverage modern tools and innovative approaches in support of quality service, timely advice, and personalized guidance. Let's realize your real estate goals together.

I'M HERE TO HELP

ANDREW PLANK REALTOR®

C (250) 360-6106 info@andrewplank.com

www.andrewplank.com

*Not intended to solicit buyers or sellers currently under contract.



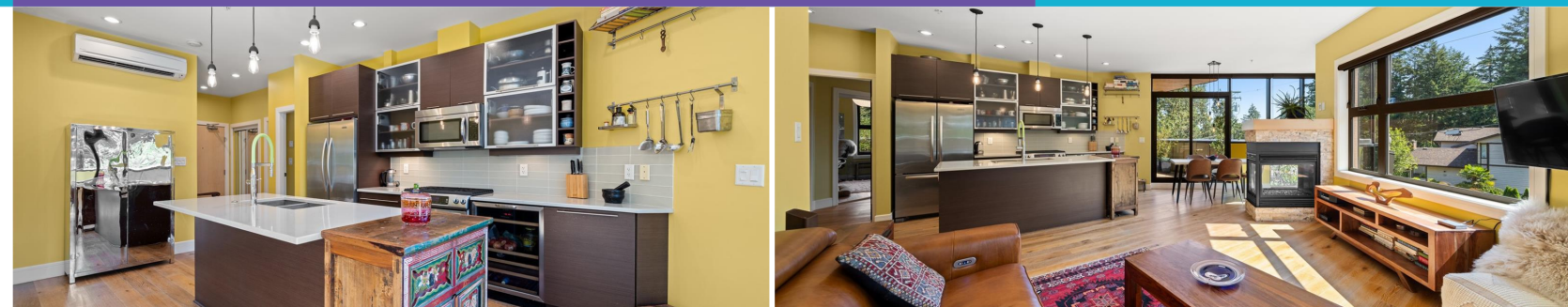
Coast Capital Realty
INDEPENDENTLY OWNED AND OPERATED

110-4460 Chatterton Way
Victoria, BC V8X 5J2



201-2850 Aldwynd Rd

Langford BC V9B 3S7





The Fairwynd - A flagship building with unique architecture.

This quiet corner unit is set amongst the trees & overlooks Royal Colwood Golf Course to the south-east. The home is gorgeous with attention to detail in all the finishes. Featuring banks of windows, two large balconies, separated bedrooms, 9' ceilings, a 3-sided gas feature fireplace, heat pump, wide-plank oak floors, gas stove, h20 on demand, BBQ hookups on the covered deck, plus a murphy bed. Walk to shopping, restaurants, and Veteran's Memorial Park (water park, playground, and Saturday markets!). Primary bedroom faces south with access to the deck, its own 5pc ensuite (with separate shower, soaker tub, and radiant in-floor heating), and a walk-in closet. Rare to find this quality for this price.



FEATURES

Area	Fairway
Bedrooms	2
Bathrooms	2
Lot Size	1105
Floor Space	1107

Dogs and cats allowed.

