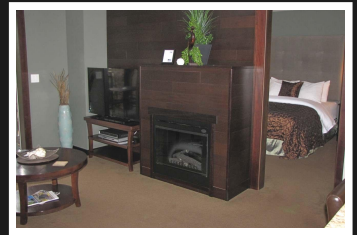
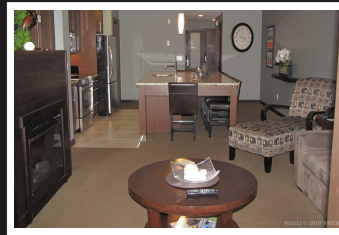
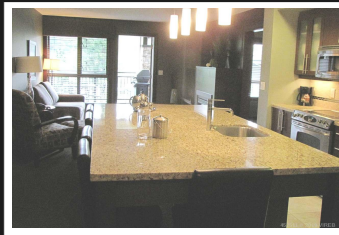


PEMBERTON
HOLMES

· ESTABLISHED 1887 ·

222-1175 RESORT DRIVE
\$39,900



222-1175 Resort Drive, Parksville

Sunrise Ridge Waterfront Resort Condo. This luxury waterfront resort is located central Vancouver Island in the seaside community of Parksville. Sandy beaches and a tropical climate make Parksville one Canada's premier vacation destinations. This is a 1/4 ownership. NOT a time share! Trade with Resorts around the world!! The unit is in the Snowbird rotation, January, February, March. The condo is 1075 sqft. Main suite has 1 bedroom, 2 bathrooms, laundry, sleeps 4. Lock-off suite sleeps 2. Both have kitchens. The suites are fully furnished, granite counter tops, heated floors, 3 tvs, fireplace, BBQ....relax on the balcony deck. Stay and enjoy or put them in the rental pool for good revenue. Resort amenities; swimming pool, hot tub, fitness facility, lounge room, covered outdoor court yard with huge fireplace, conference rooms, scenic walkways, beach access. Strata fees \$468 x 12 months includes management, maintenance, insurance, utilities, taxes.

Priced at
\$39,900

Area	Z5 Parksville	Age	2006
Bedrooms	2	Taxes	
Bathrooms	3	Tax Year	
Lot Size		MLS#	452511
Floor Space	1015	Parking	

DAN JACK

Pemberton Holmes - Parksville

Scan this QR
Code with your
smart phone



(250) 248-8801
danjack@shaw.ca
<http://danjack.realtor>

135 Alberni Hwy
Parksville, V9P 2G6