

7994 VICTORIA ROAD S

\$499,000

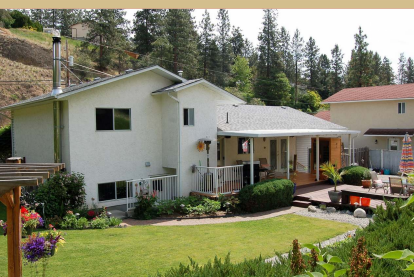
7994 VICTORIA ROAD S
SUMMERLAND



Area	Main Town
Bedrooms	3
Bathrooms	2
Lot Size	0.29 acre
Floor Space	1585 sf
Age	1989
Taxes	\$2359
Tax Year	2017
MLS#	173085
Parking	1 Space, Open, Single garage, Addl Parking Avail, RV Parking



To view online scan this
QR code with your smart
phone



7994 VICTORIA ROAD S

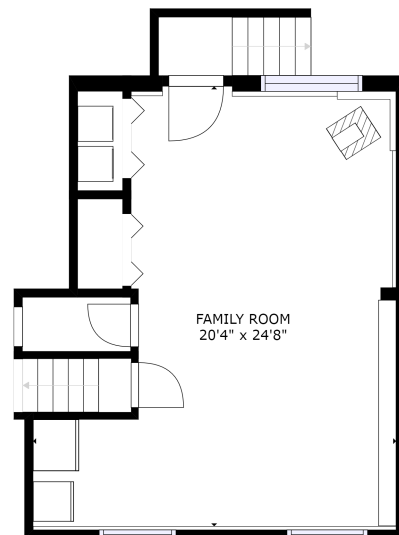
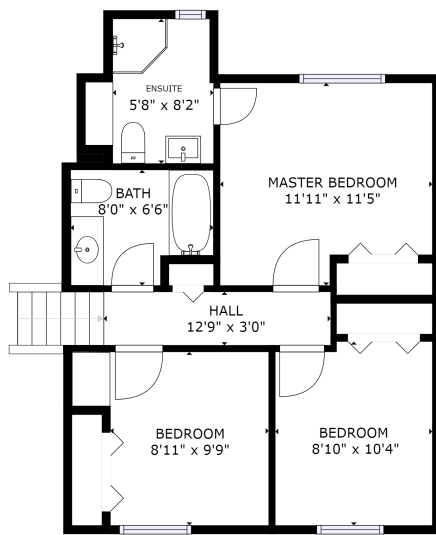
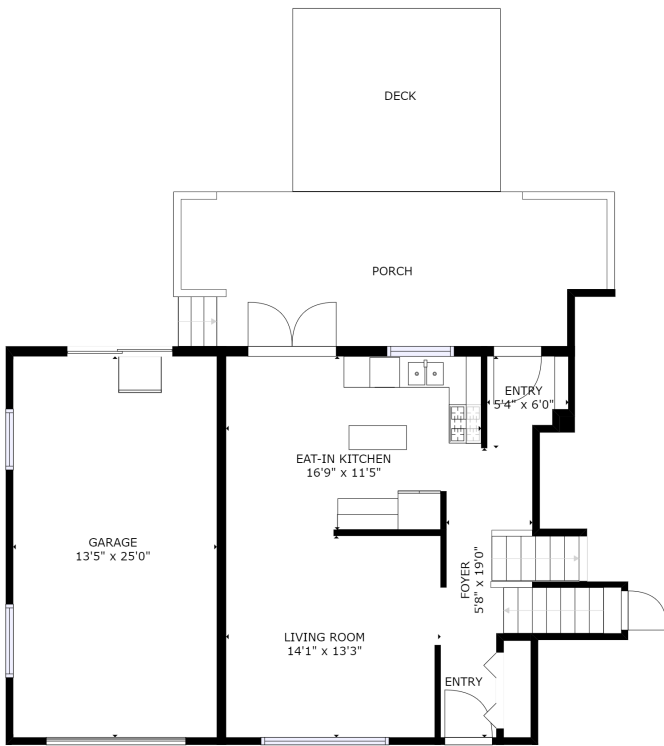
Wonderful opportunity! 3 bed, 2 bath split level home on a gorgeous .29 acre lot. Functional floor plan with kitchen, dining & living room on the main, 3 bedrooms up, 4 pc bath with skylight & updated 3 pc ensuite, spacious family room, built-in shelving & laundry below, cozy woodstove, outside access and huge 4' crawlspace for storage. Features hardwood, bamboo and tile flooring, updated kitchen with new counter tops, tile backsplash, open stainless shelving, gas stove, stainless fridge, dishwasher, central vac, central air, new hot water tank, newer roof & sliders onto the deck.

SHANNON VANDERMEY
ROYAL LEPAGE PARKSIDE REALTY

(250) 494-0505

Po Box 930; 9925 Main St
shannoncrealty@telus.net
www.homesintheokanagan.com





7994 VICTORIA ROAD S

Now outside! Manicured lawns, plentiful gardens, large covered deck, natural gas BBQ hookup, open deck, storage shed, underground irrigation, loads of parking for all your toys & garage with over-height automatic door. Wave to the Historic KVR Steam Train as it passes by while you enjoy this oasis, cool beverage in hand!

Check out 3D 360* Video at <https://bit.ly/2y5DeB5>
 Measurements approx. Buyer to verify if important.

SHANNON VANDERMEY
 ROYAL LEPAGE PARKSIDE REALTY

(250) 494-0505

Po Box 930; 9925 Main St
 shannoncrealty@telus.net
 www.homesintheokanagan.com

