

Bonnington

Nelson Rural



3904 Reo Road

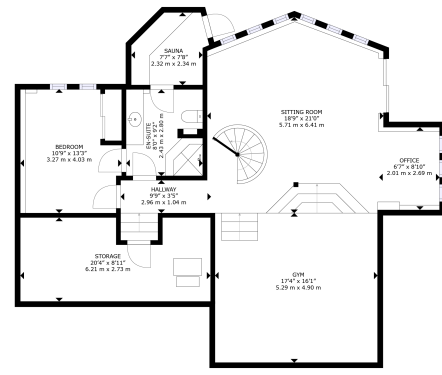


Karen Bennett
Bennett Family Real Estate
Each office is independently owned and operated

karen@nelsonproperty.com

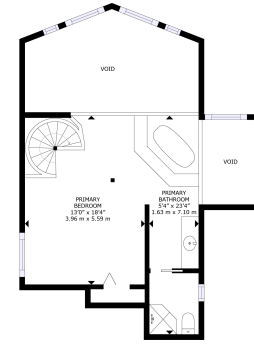


Karen Bennett
Bennett Family Real Estate
Each office is independently owned and operated



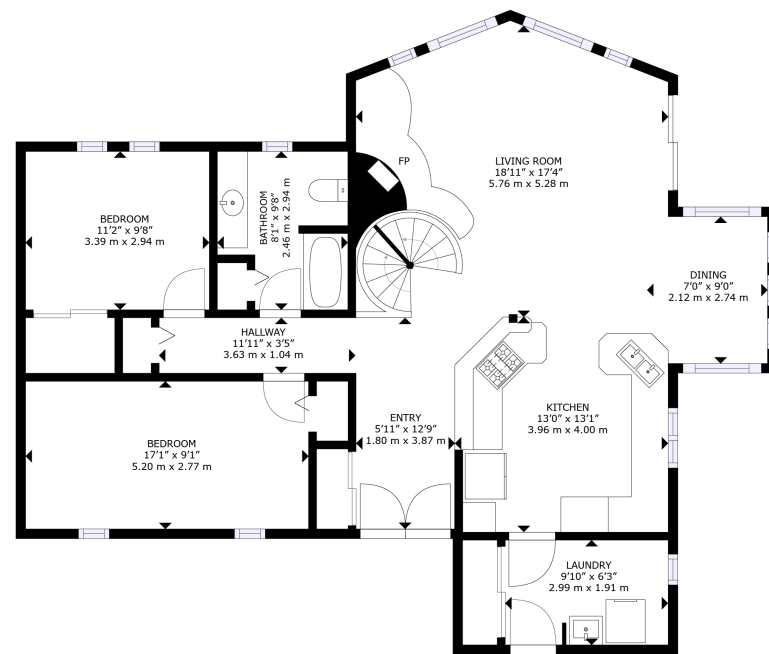
BASEMENT

GROSS INTERNAL AREA
BASEMENT: 1,235 sq. ft. 115 m²
TOTAL: 2,772 sq. ft. 257 m²
SIZES AND DIMENSIONS ARE APPROXIMATE, ACTUAL MAY VARY.



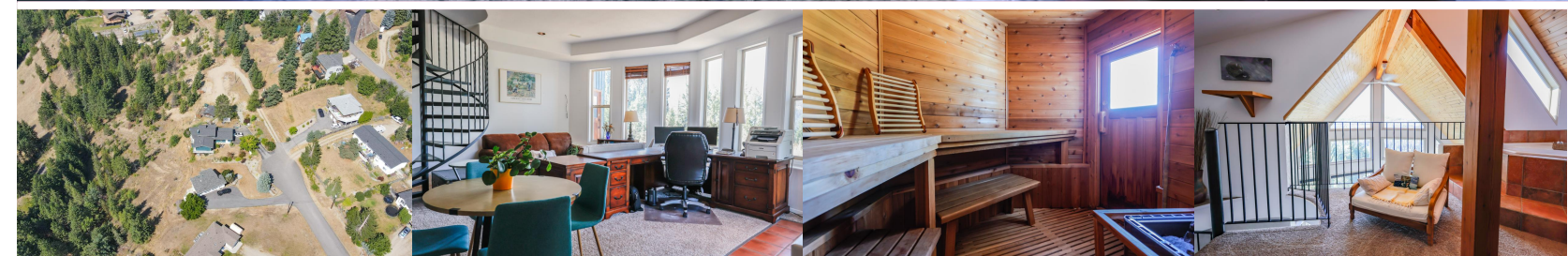
2ND FLOOR

GROSS INTERNAL AREA
2ND FLOOR: 379 sq. ft. 35 m²
TOTAL: 2,772 sq. ft. 257 m²
SIZES AND DIMENSIONS ARE APPROXIMATE, ACTUAL MAY VARY.



1ST FLOOR

GROSS INTERNAL AREA
BASEMENT: 1,235 sq. ft. 115 m², 1ST FLOOR: 1,158 sq. ft. 107 m²
2ND FLOOR: 379 sq. ft. 35 m²
TOTAL: 2,772 sq. ft. 257 m²
SIZES AND DIMENSIONS ARE APPROXIMATE, ACTUAL MAY VARY.



3904 Reo Road

Step into this remarkable custom-designed residence nestled in Bonnington. Boasting four bedrooms and three bathrooms, this home is situated on an expansive .69-acre lot, providing stunning views of the river. The open floor plan, complemented by vaulted ceilings, creates an atmosphere of spaciousness, while the loft master bedroom with ensuite adds a touch of opulence. The finished basement offers additional living space, and the double garage ensures ample parking and storage. Recently updated in 2022 with exterior painting, striking rock hardscaping, and an upgraded deck/stairs, this home now boasts enhanced curb appeal and an elevated outdoor living experience. As an added bonus, there is a detached studio/office space, perfect for creative endeavours, remote work, or accommodating guests. Nestled in a fantastic neighbourhood, this property seamlessly blends natural beauty with modern comforts, making it an ideal sanctuary for those in search of both tranquility and refinement. Plus, it's conveniently located just 10 minutes from Nelson!

Karen Bennett
Bennett Family Real Estate

Area Nelson West/South
Bedrooms Slocan
Bathrooms 4
Lot Size 3
Floor Space 0.69
2588

Age 1993
Taxes 4366
Tax Year 2023
MLS# 2474519
Parking Double garage,
Attached

To view interactive floor plans scan this QR code with your smart phone



karen@nelsonproperty.com

