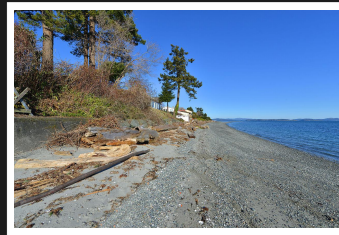


PEMBERTON
HOLMES

· ESTABLISHED 1887 ·

BREATHTAKING OCEAN FRONT

9235 Lochside Dr



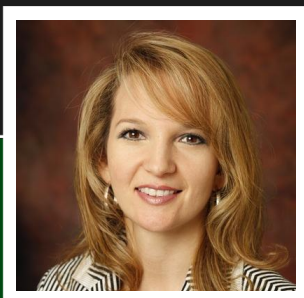
0.25 Acre Building Lot

A BREATHTAKING OCEAN FRONT VIEW on a low-bank flat building lot has been patiently awaiting your dream home! This 75feet wide property has a spectacular view of Haro Strait and Mt Baker with LOW BANK EASY-ACCESS OCEAN FRONT that's so close it feels like you're on a ship! The property is over 1/4 acre that's flat with utility services easy to access on the street. The location is close and convenient to every need. Only 5 minutes to the International Airport, Sidney shops, BC Ferries and 30 minutes to downtown Victoria but feels tranquil and removed from the busy life. There are many close parks and a long beach walk is a step away! Remember to bring your kayak! Note the neighbour's garage is encroaching on property and will be removed. Also the BC Ministry's Archaeology requirements are to be followed to build on this property. This is a freehold lot with no GST! Call for details. If size important please verify

Priced at
\$899,000

Area Bazan Bay
Lot Width 75ft
Lot Depth 146ft
Lot Size 0.25 acres
Lot Size 10,979sf

Assessment \$1,059,000.00
Taxes \$4126
Tax Year 2018
MLS# 405560
District N.Saanich



NICOLE BURGESS

Pemberton Holmes - Cloverdale

Scan this QR
Code with your
smart phone



(250) 384-8124
nicole@nicoleburgess.com

150 - 805 Cloverdale Ave
Victoria, V8X 2S9