

PEMBERTON  
HOLMES

· ESTABLISHED 1887 ·

# SUNNY SOOKE CONDO

3-2045 Gatewood Rd

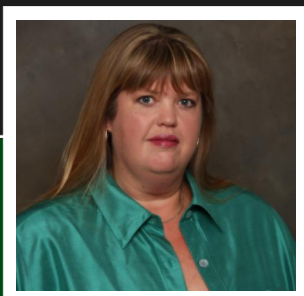


## 2 BEDROOMS, 1 BATHROOM

Sunny Ground floor unit walking or motor scooter distance to Sooke Centre shopping. You will enjoy the extra large bright bedrooms and living room with patio sliders to a nice sunny covered patio area facing south with a quiet garden spot..... A Perfect kitchen with dishwasher, fridge, stove and double sinks for doing dishes and looking out side. The laundry room is built for storage as well as good sized washer and dryer. 16 owners share this great holding property of over 1 acre in the fast developing Sooke Core area. Bring your pets this is a great place for walking and space. Strata well run. Currently tenanted month to month, good tenant! Pictures from prior to tenant.

**Priced at**  
**\$249,000**

Area	Sooke Vill Core	Age	1974
Bedrooms	2	Taxes	1470
Bathrooms	1	Tax Year	2017
Lot Size	0.03	MLS#	382783
Floor Space	1274	Parking	Driveway



**STACEY SCHARF**

Pemberton Holmes - Sooke

Scan this QR  
Code with your  
smart phone



(250) 642-3240  
sascharf@shaw.ca  
www.staceyscharf.com

2 - 6716 West Coast Rd  
Sooke, V9Z 0P7