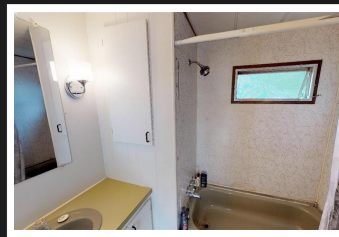


PEMBERTON  
HOLMES

· ESTABLISHED 1887 ·

## HIDDEN VALLEY MANUFACTURED HOME PARK 27-2500 Florence Lake Rd



### 27-2500 Florence Lake Rd

Very clean home in very desirable location of Hidden Valley Manufactured Home Park. Nice flat lot with parking for two vehicles located at the end of a no thru road, so you get very minimal traffic coming and going. The home has hard surface flooring throughout, with the exception of brand new carpet installed in both bedrooms. This home comes with some creature comforts, like in home laundry, a covered parking stall and a large entertaining deck. This park allows small pets (including dogs up to 18 inches at the shoulder). One owner must be age 55 or older with the second occupant allowed to be younger, however this is an adult orientated park. Make sure you view this home as it represents excellent value. \*\*\*\*View Floor Plans at [www.jeffmartens.ca](http://www.jeffmartens.ca)\*\*\*\*

**Priced at  
\$64,900**



JEFF MARTENS PREC\*

Pemberton Holmes - Cloverdale

Area	Florence Lake	Age	1972
Bedrooms	2	Taxes	201
Bathrooms	1	Tax Year	2018
Lot Size	0.02	MLS#	412967
Floor Space	624	Parking	2 Spaces

Scan this QR  
Code with your  
smart phone



(250) 384-8124  
[jeff@jeffmartens.ca](mailto:jeff@jeffmartens.ca)  
[www.jeffmartens.ca](http://www.jeffmartens.ca)

150 - 805 Cloverdale Ave  
Victoria, V8X 2S9