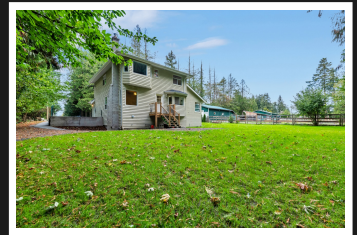
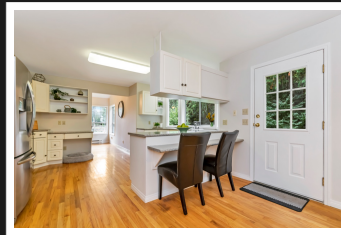


PEMBERTON
HOLMES

· ESTABLISHED 1887 ·

7479 TOMLINSON ROAD



7479 Tomlinson Road

HOBBY FARM ENTHUSIASTS. This large family home has everything you need and more. Privately tucked away on 2.4 acres and backing onto incredible greenspace with your own private trails to explore. The bright and open master suite has a newly renovated ensuite with soaker tub and stand up shower. The upper level is finished off with 3 more bedrooms and 2 bathrooms. The generous main level hosts an office/den, a family room with a generous country kitchen, a welcoming living and dining room as well as a powder room and a perfect porch to embrace the nature that surrounds you. The potential is endless with the many outbuildings, 11+ stall barn area, insulated tack room, walk out paddocks and a fabulous all-weather sand ring. Plenty of storage throughout with a 2 car garage and a full basement ready for your ideas and final touches. All this including a Private detached 2 bed, 2 bath, plus office extended family cottage.

Priced at
\$1,775,000

Area	Saanichton	Age	1994
Bedrooms	6	Taxes	2194
Bathrooms	5	Tax Year	2020
Lot Size	104108.4	MLS#	857571
Floor Space	2870	Parking	

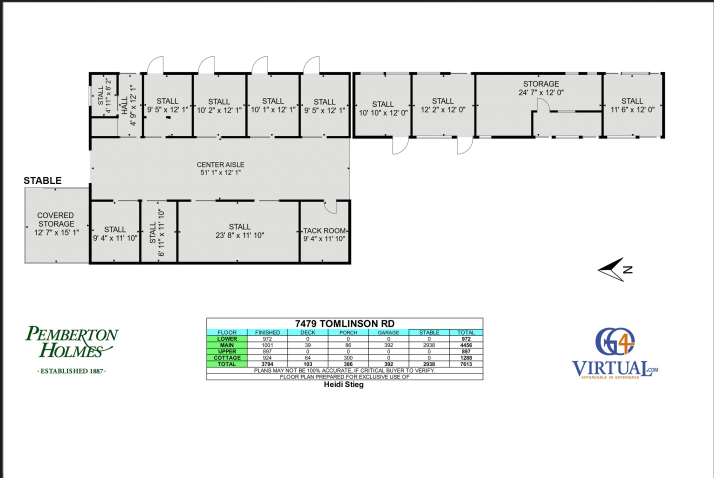


HEIDI STIEG
Pemberton Holmes - Westshore

Scan this QR
Code with your
smart phone



(250) 478-0779
heidi@heidistieg.com
www.heidistieg.com
103 - 814 Goldstream Ave
Victoria, V9B 2X7



7479 Tomlinson Road

HOBBY FARM ENTHUSIASTS. This large family home has everything you need and more. Privately tucked away on 2.4 acres and backing onto incredible greenspace with your own private trails to explore. The bright and open master suite has a newly renovated ensuite with soaker tub and stand up shower. The upper level is finished off with 3 more bedrooms and 2 bathrooms. The generous main level hosts an office/den, a family room with a generous country kitchen, a welcoming living and dining room as well as a powder room and a perfect porch to embrace the nature that surrounds you. The potential is endless with the many outbuildings, 11+ stall barn area, insulated tack room, walk out paddocks and a fabulous all-weather sand ring. Plenty of storage throughout with a 2 car garage and a full basement ready for your ideas and final touches. All this including a Private detached 2 bed, 2 bath, plus office extended family cottage.



HEIDI STIEG
Pemberton Holmes - Westshore

(250) 478-0779
heidi@heidistieg.com
www.heidistieg.com
103 - 814 Goldstream Ave
Victoria, V9B 2X7