

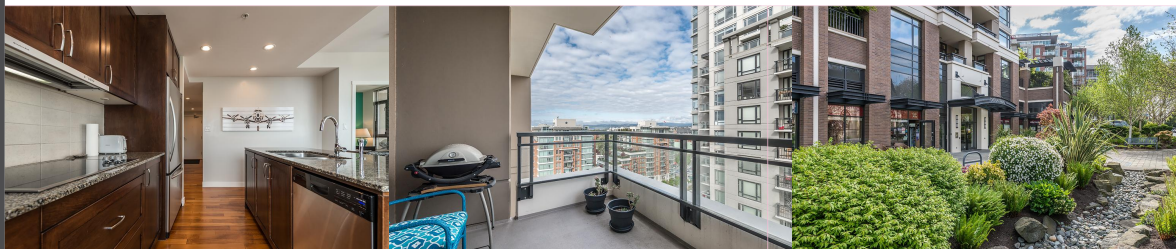
Downtown

\$ 779,900

1202-788 Humboldt St



Area	Downtown
Bedrooms	2
Bathrooms	2
Lot Size	0.02
Floor Space	1039
Age	2006
Taxes	3764
Tax Year	2017
MLS#	390877
Parking	1 Space, Underground - Secure



Two Bedroom Condo in the Belvedere Building!

Luxury two bedroom, two bathroom corner condo in the prestigious Belvedere building by Concert Properties. This sought-after, steel and concrete building is located in an unbeatable neighbourhood, just steps from the Inner Harbour, the Empress Hotel, Beacon Hill Park, and all of the attractions and amenities in the Downtown core. Enjoy views of the city skyline, mountains and water from either of the two sunny patios. Inside, the condo features high-end finishes throughout, including granite countertops, hardwood flooring, and stainless-steel appliances. Floor to ceiling windows in every room fill the condo with light. The open concept kitchen and living areas separate the two bedrooms from each other, allowing for privacy and quiet. The master suite boasts double closets and a beautiful ensuite with separate shower and soaker tub. The building offers secure underground parking, separate storage, a large hobby room and exercise room. This is an opportunity you won't want to miss!



To view interactive floor plans scan this QR code with your smart phone

Mike Pearce

The Condo Group, Burr Properties Ltd.

(250) 382-6636

K-3388 Douglas St

mike@thecondogroup.com

<http://thecondogroup.com/users/mike-pearce>

