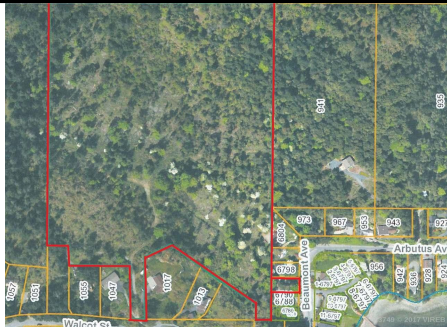




Breathtaking Maple Bay View Acreage!

\$1,499,000



Lt B Walcot Street

Seldom does pristine and natural ocean view acreage like this come on the market. Outstanding 24+ Acres, A5 Zoned (North Cowichan) property is offered in 2 titles with 2 access points in the heart of beautiful Maple Bay. The parcel has access to municipal water at the lot line and sits just behind established residential neighbourhoods. The property should be able to be redeveloped into 2 equally sized parcels or potentially more. There are incredible vantage points on the property with rock outcroppings, Gary Oak & Arbutus as well as meadows and mature forests. This is truly a rare offering and would make for a fantastic estate or retreat.

SPECS & FEATURES

Area	Z3 East Duncan	Taxes	\$7,290
Zoning	A5	Tax Year	2016
Zoning Type	Residential	MLS#	423749
Lot Size	24.43		



To view interactive floor plans scan this QR code with your smart phone



Johanssen Group

RE/MAX of Duncan

Each office is independently owned and operated

(250) 748-8080 or (250) 743-5151

Toll Free - 1-888-748-8088

mail@kimjohanssen.com

<http://www.kimjohanssen.com>