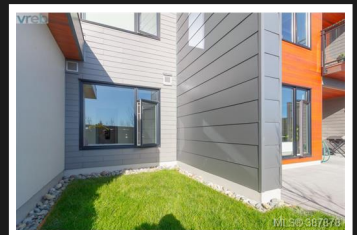
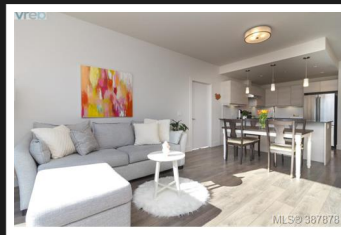
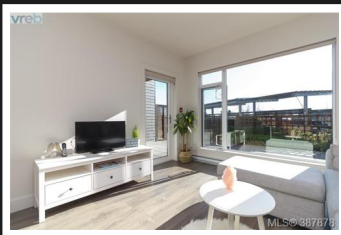


PEMBERTON  
HOLMES

· ESTABLISHED 1887 ·

# 2 BED 2 BATH RENTALS AND PETS!

110-3815 Rowland Ave

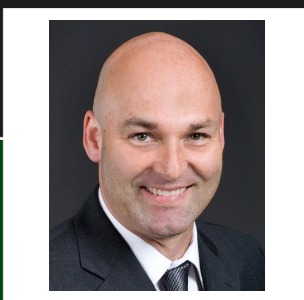


## 110-3815 Rowland Ave (RENTALS AND PETS WELCOME)

This impressive 842 sq ft 2 Bed, 2 Bath contemporary home is minutes from Uptown Centre, tucked away on a quiet street. Enjoy preparing meals in your chef inspired kitchen, with gleaming quartz counter tops and an upgraded appliance package. The open concept floor plan ensures you are always part of the party. A large, bright, living and dining area separate 2 generously sized bedrooms, enhanced with huge windows to let in plenty of natural light through this South East exposure. Looking for a more private access to your home? Walk in through your gated yard, where you can spend the summers lounging in comfort in over 600 sq.ft of space complete with lawn. Enjoy the warmth and comfort of secured underground parking, storage and bicycle storage. Uptown Centre, Whole Foods, Save On Foods, Banks, Restaurants, the Galloping Goose Trail, Buses and more all within walking distance.

**Priced at**  
**\$529,000**

Area	West Saanich	Age	2014
Bedrooms	2	Taxes	2010
Bathrooms	2	Tax Year	2017
Lot Size	0.03	MLS#	387878
Floor Space	842	Parking	1 Underground



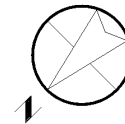
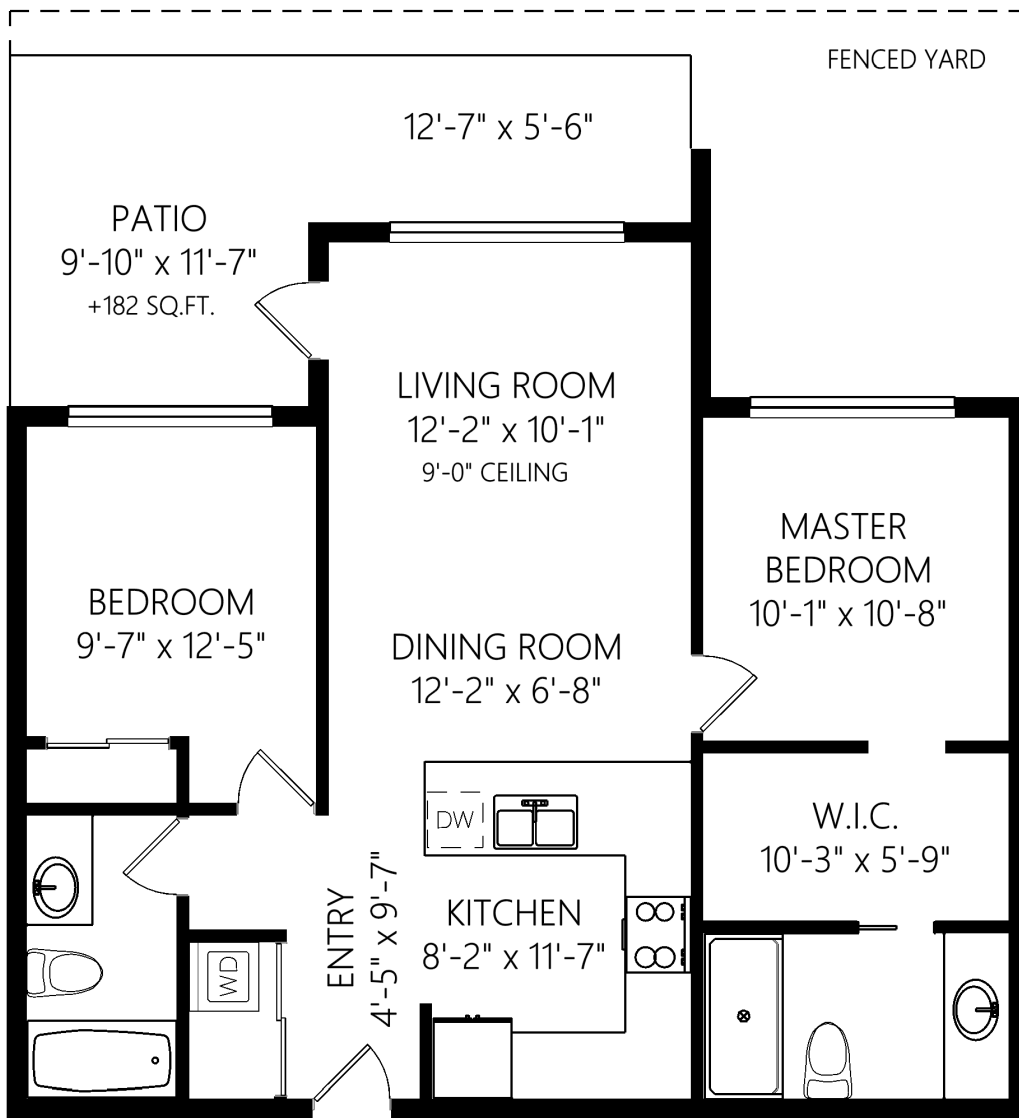
CHRIS LEBLANC \*PREC  
Pemberton Holmes - Cloverdale

Scan this QR  
Code with your  
smart phone



(250) 384-8124  
chris@chrisleblancsells.com  
chrisleblancsells.com

150 - 805 Cloverdale Ave  
Victoria, V8X 2S9



**SINGLE LEVEL**  
842 FINISHED SQ.FT.  
+ ADDNL. SQ.FT. WHERE NOTED



**CHRIS LEBLANC \*PREC**

Pemberton Holmes - Cloverdale

(250) 384-8124  
chris@chrisleblancsells.com  
chrisleblancsells.com

150 - 805 Cloverdale Ave  
Victoria, V8X 2S9