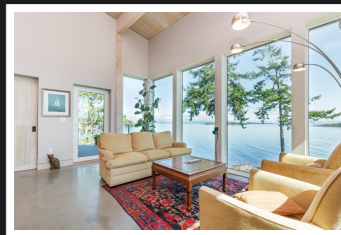


PEMBERTON
HOLMES

· ESTABLISHED 1887 ·

WALK ON OCEAN FRONT

3031 Park Place ~ Nanoose



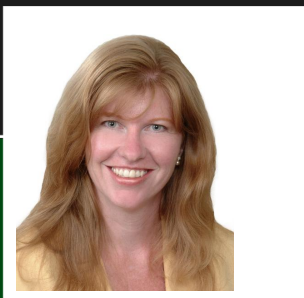
This is where you will find the west coast lifestyle you've been dreaming of

Exceptional walk on ocean front property where you can feel the ocean spray and enjoy the abundant and varied marine life right outside your door. Your new home has been designed, crafted and constructed with quality, comfort and efficiency in mind, no detail has been overlooked. Some of the special features of this home include practical easy-care waxed concrete floors with radiant heating, custom oversized E-windows and doors with tilt function, custom solid core interior doors, etched feature window, Vitra wall hung low volume toilets, and a feature "Big Ass Fan" in the great room.

Priced at
\$1,800,000

Area Nanoose
Bedrooms 2
Bathrooms 3
Lot Size 0.29 Acre
Floor Space 2751

Built 2017
Taxes 5488
Tax Year 2018
MLS# 455293
Garage 28'8 x 39'1



SHAE WEBBER

No Hype - No Pressure - Just Great Service

Scan this QR
Code with your
smart phone



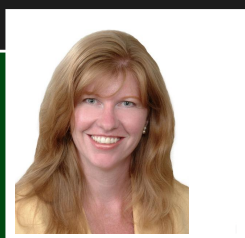
(250) 709-8888
shae@webbers.ca
<http://www.webbers.ca>

23 Queens Road
Duncan, V9L 2W1



3-D and Virtual Tours @ www.webberhomesvancouverisland.ca

The kitchen is a cook's dream with top of the line Thermador built-in appliances, custom kitchen cabinetry, walk-in pantry and soapstone counter tops. Outside, the home features galvalume metal siding with west coast wood accents. This highly efficient home provides for low energy costs and includes a rain water collection system that is used to flush the toilets. Launch your kayak steps from your door, hike the numerous trails nearby, drive your golf cart to the nearby Fairwinds Golf Course in the unique electric vehicle zone and dock your boat at Schooner Cove Marina just a short drive away. This home epitomizes the west coast lifestyle you've been looking for and dreaming of.



SHAE WEBBER

Pemberton Holmes - Duncan

877-946-8123
shae@webbers.ca
<http://www.webbers.ca>

23 Queens Road
Duncan, V9L 2W1