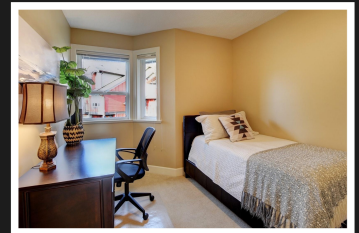
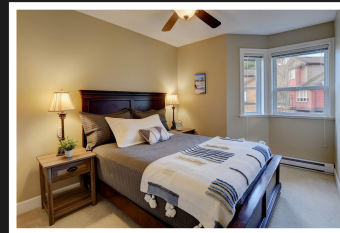
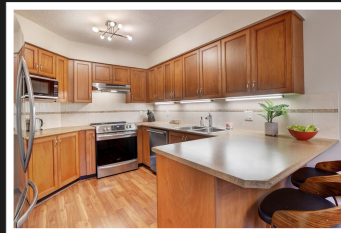
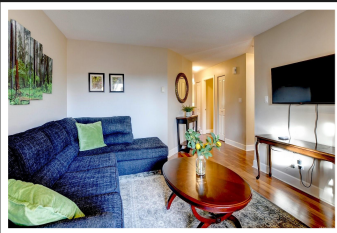


PEMBERTON
HOLMES

· ESTABLISHED 1887 ·

WELCOME HOME!

57-486 Royal Bay Dr



57-486 Royal Bay Dr

This well-maintained property offers a combination of comfort and privacy, all enhanced by a truly beautiful ocean view from your master bedroom! The open-concept layout connects the living and dining areas, creating a warm and inviting space for gatherings. Upstairs, you'll find three bedrooms, two bathrooms, including master bedroom with a walk-in closet and an en-suite bathroom. Recent updates, such as newer appliances, modern lighting fixtures, and a fresh coat of paint, infuse a contemporary ambience. The lower level includes a garage, extra storage space, a workshop, a full-size laundry room, and an exercise room! Close to 2000 sqft of usable space!



Priced at
\$786,000

Area	Royal Bay	Age	2004
Bedrooms	3	Taxes	3261
Bathrooms	3	Tax Year	2023
Lot Size	2237	MLS#	947810
Floor Space	1913	Parking	

LANA ZAREMBA

Pemberton Holmes - Westshore

Scan this QR
Code with your
smart phone



(250) 478-0779
lana@westshorerealtor.ca
www.westshorerealtor.ca

103-814 Goldstream Ave
Victoria, V9B 2X7



57-486 Royal Bay Dr

The Royal Bay Village caters to your everyday needs, with a wealth of amenities, including shopping and dining options, right at your doorstep. Explore picturesque walking trails and savour moments of serenity along the shoreline, all while indulging in ocean views. Only 20 minutes from downtown and 5 minutes to the ocean. Call now to view!



LANA ZAREMBA
Pemberton Holmes - Westshore

(250) 478-0779
lana@westshorerealtor.ca
www.westshorerealtor.ca

103-814 Goldstream Ave
Victoria, V9B 2X7