



# HOME SALES & RENTALS

*Our Town. Your Town. Mountain Town.*

[MountainTownProperties.ca](http://MountainTownProperties.ca)

Box 2277, 2020 Washington Street,  
Rossland BC V0G 1Y0



## 107-4320 RED MOUNTAIN ROAD

**\$669,000**

### SKI RIGHT TO YOUR PATIO!

Ski right to your patio and straight into the hot tub at this ground-level condo at the base of Red Mountain Resort! The spacious 3-bedroom, 2-bathroom suite provides privacy, unimpeded view and convenient in/out access! Situated on the ground floor is great access for pets and people!

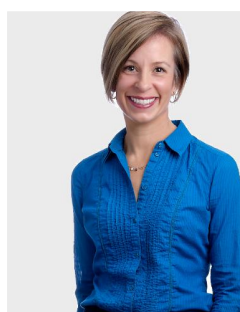
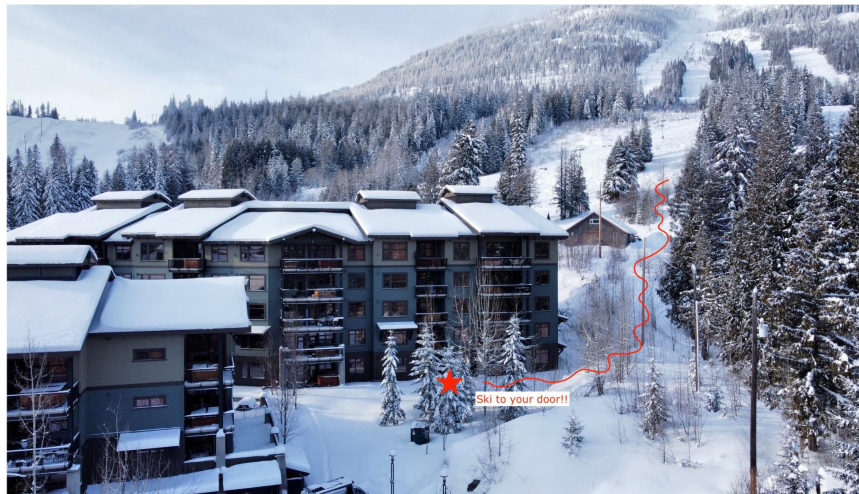
All furnishings and equipment are included; what you see is what you get!

You'll benefit from the heated underground garage with an assigned parking spot, no traffic line ups for parking! You have the choice to keep this magical property all to yourself or share the experience by enrolling in the Red rental program or continue self-management if you like.

Shop and compare; Slalom Creek 107C represents great value compared to new construction that won't be ready for 2 years. Monthly Strata fee: \$419.25, pets allowed!

### FEATURES

- Ski to your patio.
- Hot Tub
- Recreation Centre with cinema, gym, pool table, foosball table & ping pong table
- 3 Bedroom / 2 Baths
- Underground Heated Parking
- Ski Locker
- Incredible Value Compared to New Construction



### JODIE OUIMET

Managing Broker

C. 250-368-7166

E. [jodie@mountaintownproperties.ca](mailto:jodie@mountaintownproperties.ca)

W. [MountainTownProperties.ca](http://MountainTownProperties.ca)