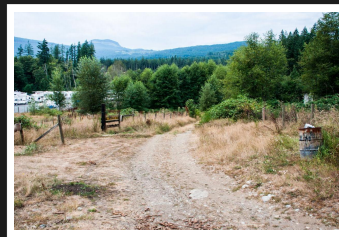
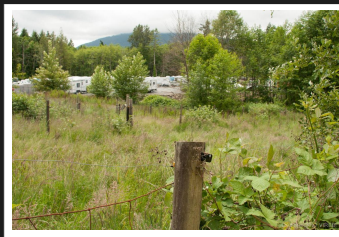


PEMBERTON
HOLMES

· ESTABLISHED 1887 ·

5.18 ACRES INDUSTRIAL LAND

Great Locataion with Highway Access!!



10910 & 10920 Westdowne Road

5.18 acres zoned Industrial I-1. This property is made up of 2 legal lots (MLS# 429885 & 429900 - 2.59 acres each zoned Industrial I.1) with great highway exposure on the South end of Ladysmith. Located in a commercial and light industrial area that includes a mobile home park and self storage facility. 10910 has an older home presently rented out for \$1,200.00. These properties can each have 1 residence and are ideal for light manufacturing, Self Storage, Equipment Sales and Storage, Contractor sales etc. City water is located approximately 90 metres from the north end of the property on Westdowne Road, The property is on gently sloping land with mountain views and a small creek at the back of the property.

Priced at
\$895,000

Area Z3 Ladysmith
Bedrooms
Bathrooms
Lot Size 5.18
Floor Space

Age
Taxes 469
Tax Year 2017
MLS# 429938
Parking



GERRY BELTGENS

Pemberton Holmes - Ladysmith

Scan this QR
Code with your
smart phone



(250) 924-4808
vanislerealestate@gmail.com
<http://vanislerealestate.ca>

P.o. Box 1443 - 516 1st Avenue
Ladysmith, V9G 1A7