

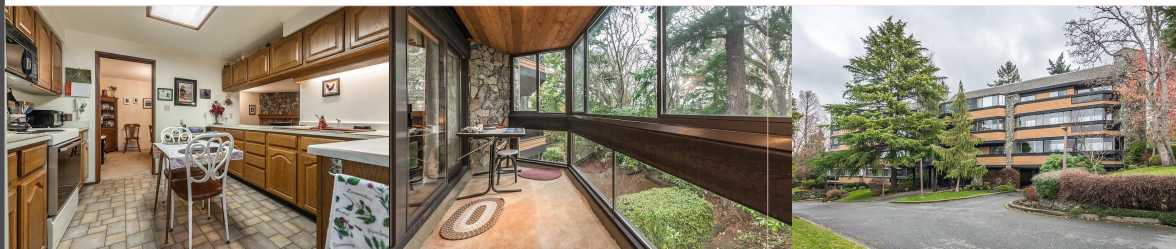
# Maplewood

\$ 375,000

305-1106 Glenora Pl



Area	Maplewood
Bedrooms	2
Bathrooms	1
Lot Size	0.03
Floor Space	1154
Age	1981
Taxes	1529
Tax Year	2017
MLS#	385873
Parking	Street Only



## 305-1106 Glenora Pl

Don't miss this opportunity to own a two bedroom condo in an adult-oriented building tucked away on a quiet residential street off of Quadra. Convenient location provides easy access to restaurants, groceries, shopping and transit. The building backs on to Playfair Park, and the setting is lovely and lush with landscaping and maintained gardens. The condo offers a spacious floorplan of over 1,100 sqft with two large bedrooms, a cheater ensuite bath, and a large kitchen overlooking the separate dining area and living spaces. Cozy up by the wood-burning fireplace, or sit on the enclosed deck with treed views. In-suite laundry is included, as well as plenty of storage throughout the condo and a separate storage locker. Walk to Swan Lake or the Cedar Hill Golf Course. An excellent option for low-maintenance living, and simple upgrades will make this home your own.



To view interactive floor plans scan this QR code with your smart phone

Andrew Hrushowy

The Condo Group, Burr Properties Ltd.

(250) 382-6636

K-3388 Douglas St  
andrewh@burrproperties.com

