



find your way

CHRISTOPH

REAL ESTATE GROUP

2445 Island S Hwy

\$849,900



BEDROOMS: 4 BATH: 2 SQUARE FOOTAGE: 1920 LOT ACRES: .277 LOCATION: Campbell River



Jakob Christoph

PERSONAL REAL ESTATE CORPORATION

*office
cell
email
web*

250-339-2021
250-702-6408
office@wefindyourway.ca
www.wefindyourway.ca



RE/MAX

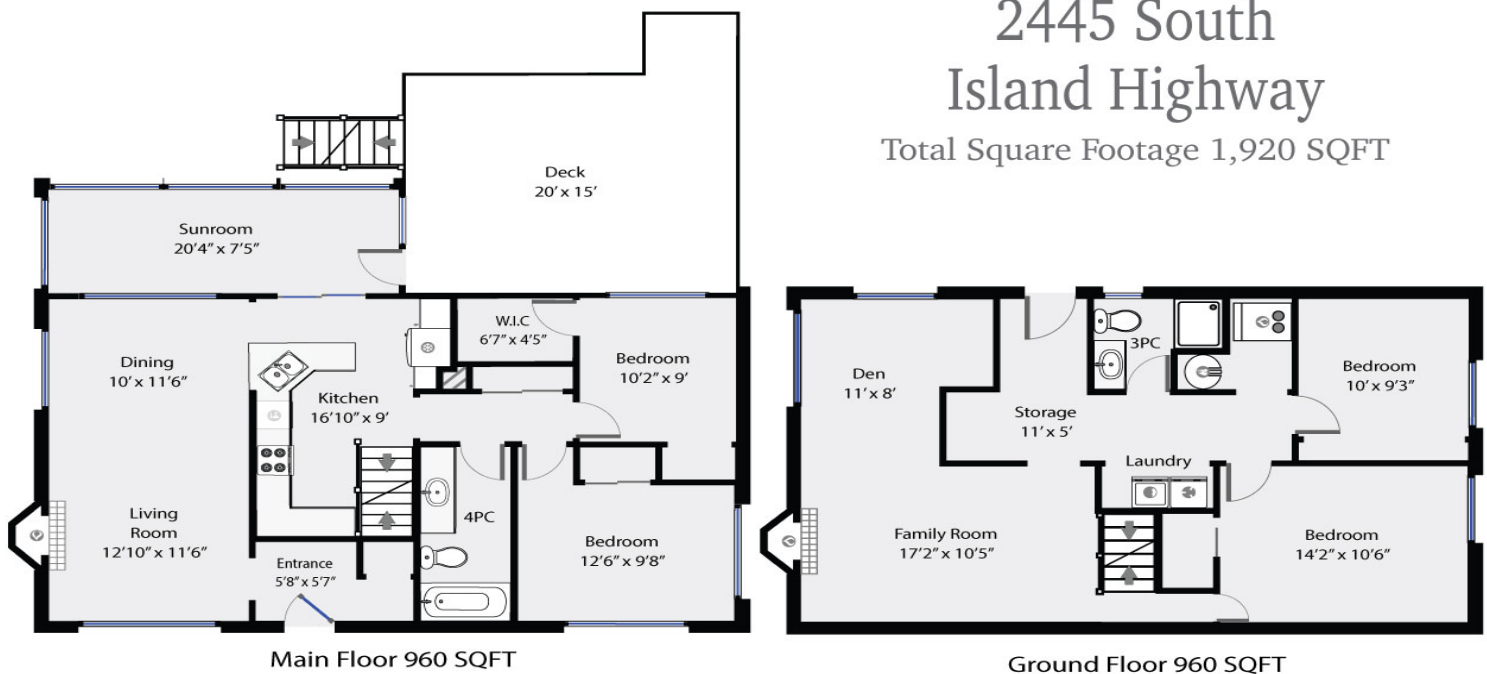
EACH OFFICE IS INDEPENDENTLY OWNED AND OPERATED.
282 ANDERTON AVE | COMOX BC | CANADA | V9M1Y2

FLOORPLANS AND MORE INFORMATION ON REVERSE SIDE. →



About 2445 Island S Hwy

First Impressions count! The curb appeal of dreams - thick hedging with welcoming arch entrance, lovingly maintained garden beds . West Coast dream walk-on waterfront property with views over the Georgia Strait towards the mainland coastal mountains and Quadra Island. Situated on a lot that enjoys a longer stretch of waterfront than most neighbouring properties with a spacious footprint no longer attainable on bare oceanfront land. Home is in immaculate condition with cheerful colours & hardwood floors. Almost a third acre of yard for kids & dogs, established garden beds, concrete pad with fire pit near the shoreline. Fly fishing right outside of the house. Carefully updated with a new forced air gas furnace (2018), rip/rap rebuilt in 2016 (to city specs), newer roof & siding. A short walk to all Willow Point amenities:downtown, marina, airport, ferry terminal, golf course, schools, Elk Falls & the slopes of Mountain Washington. A million dollar view without the price tag!



All measurements to be verified by purchaser if important. Measurements on plans are intended for visual reference only and should be verified if important. All Area square footage totals are inclusive of exterior walls. All interior dimensions are from interior walls.

MEASUREMENTS ARE APPROXIMATE AND TO BE VERIFIED IF IMPORTANT