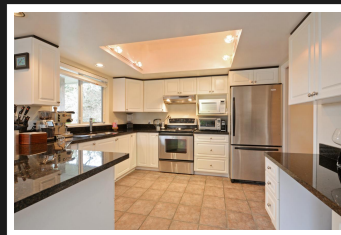


PEMBERTON
HOLMES

· ESTABLISHED 1887 ·

SEMI CUSTOM FAMILY HOME

940 Bearwood Lane



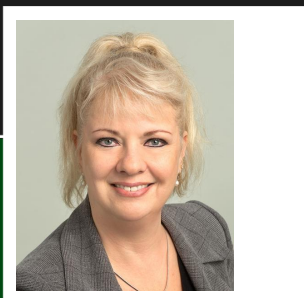
3 BEDROOMS, 2 BATHROOMS

***AUSPICIOUS LOCATION for Beautiful Semi-Custom Family home in Prestigious Broadmead. From the moment you open the front door into the spacious entrance, you will feel welcomed into this gorgeous well laid out home. The rich cherry wood floors draw you up the stairs into the spacious, bright open living area with 9ft ceilings. Enjoy views from all windows or from the glassed deck of the Valley, Old Growth & Mature Trees & Sooke Hills. You won't be disappointed with the Deluxe finishings & Gourmet kitchen. Features include: quartz counter-tops, SS appliance, eating bar, Spa-like His & Her ensuite with soaker tub & glass shower, 2 fireplaces (1 wood & 1 gas see through), Skylight, Energy Eff. Gas Furnace, Hot Water on Demand, Travertine floors (lower level), Central Vac, etc. Close to shopping, buses, rec.center, walking trails, Beaver & Elk Lakes. You don't want to miss this one!

Priced at
\$1,088,888

Area	Broadmead
Bedrooms	3
Bathrooms	2
Lot Size	0.25
Floor Space	2488

Age	1992
Taxes	5114
Tax Year	2017
MLS#	385864
Parking	Garage Double



CORIE MEYER

Pemberton Holmes - Cloverdale

Scan this QR
Code with your
smart phone



(250) 384-8124
coriemey@gmail.com
<http://www.coriemeyer.com>

150 - 805 Cloverdale Ave
Victoria, V8X 2S9